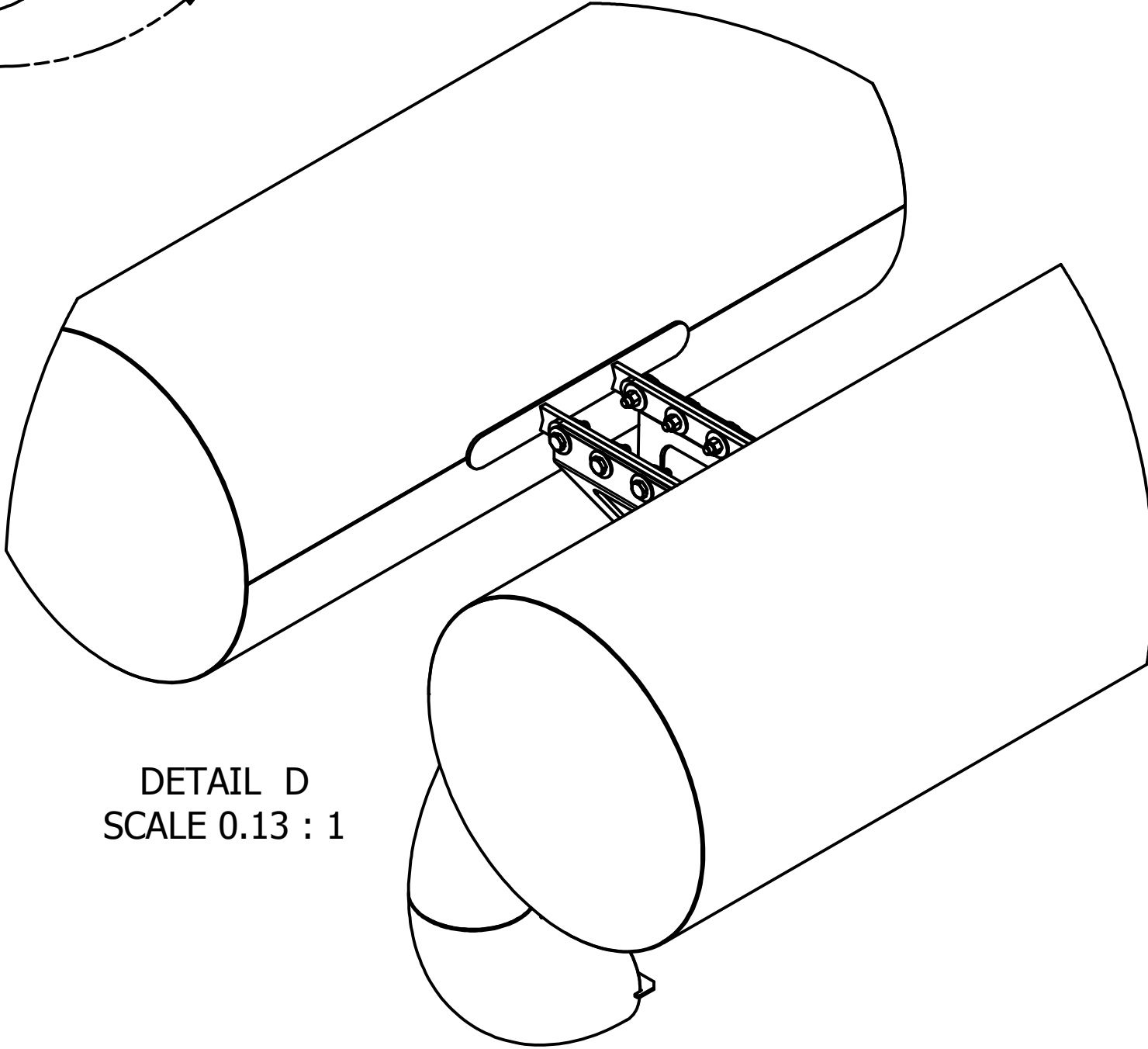
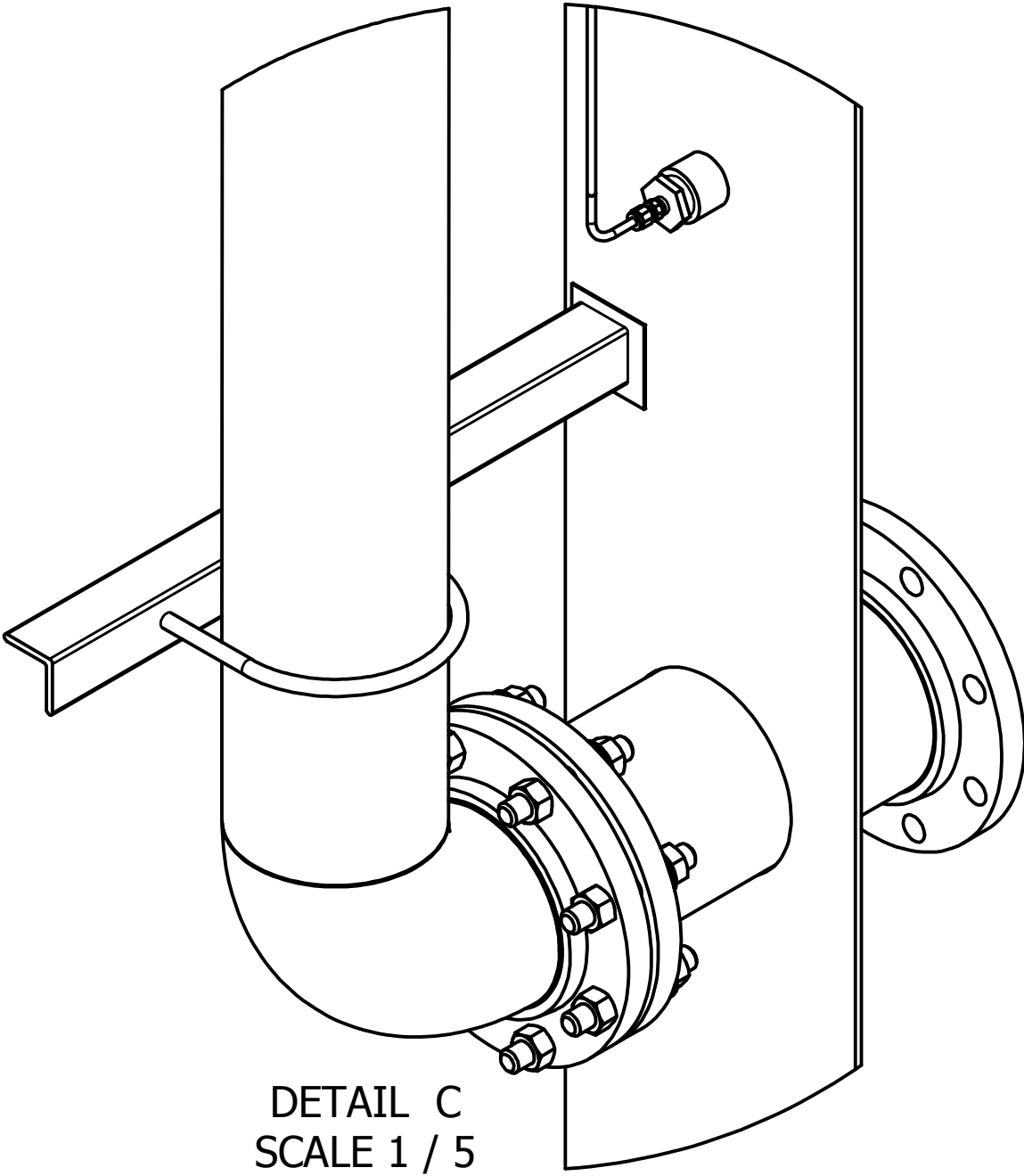
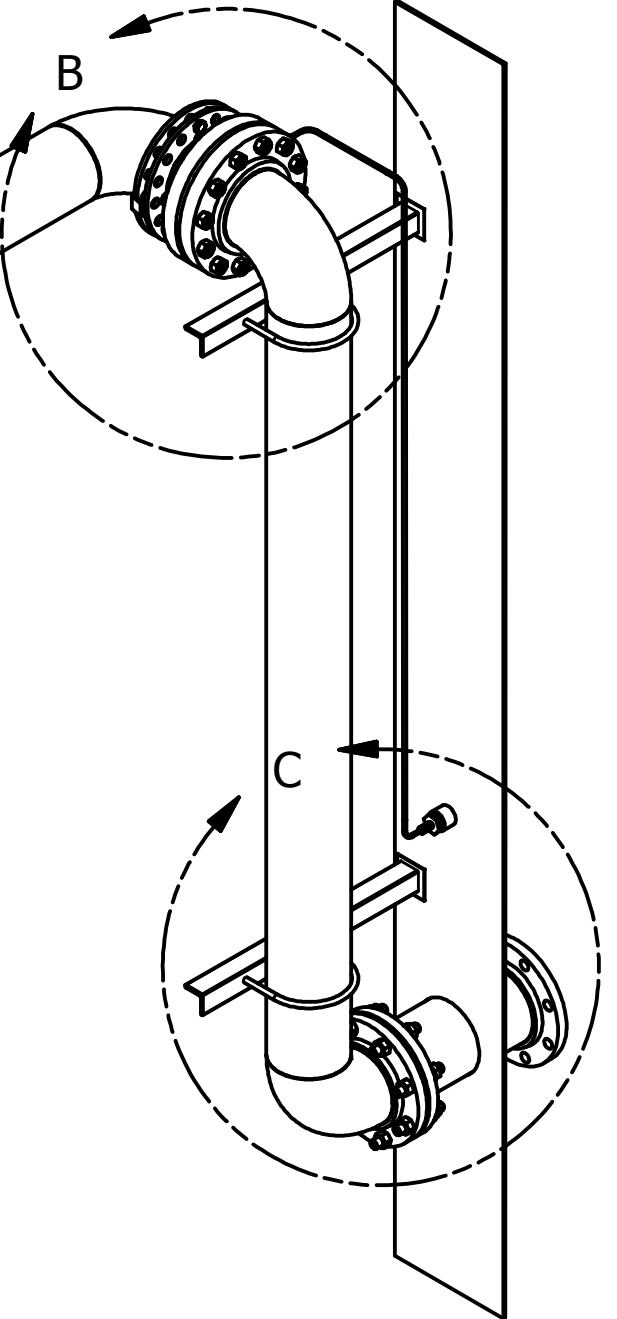
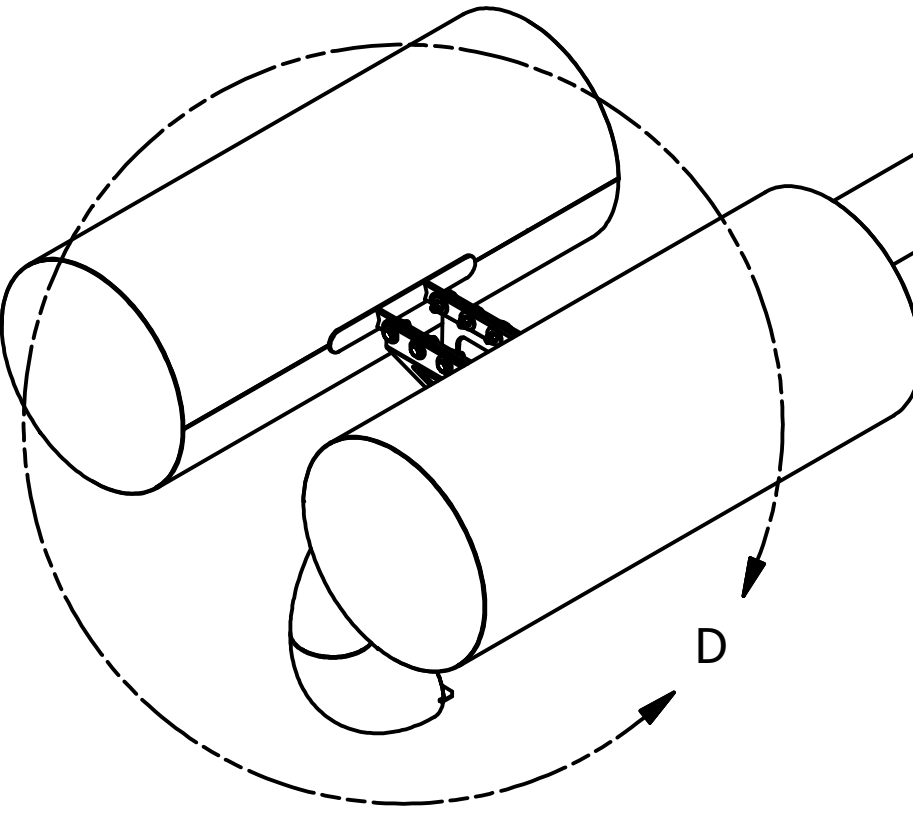
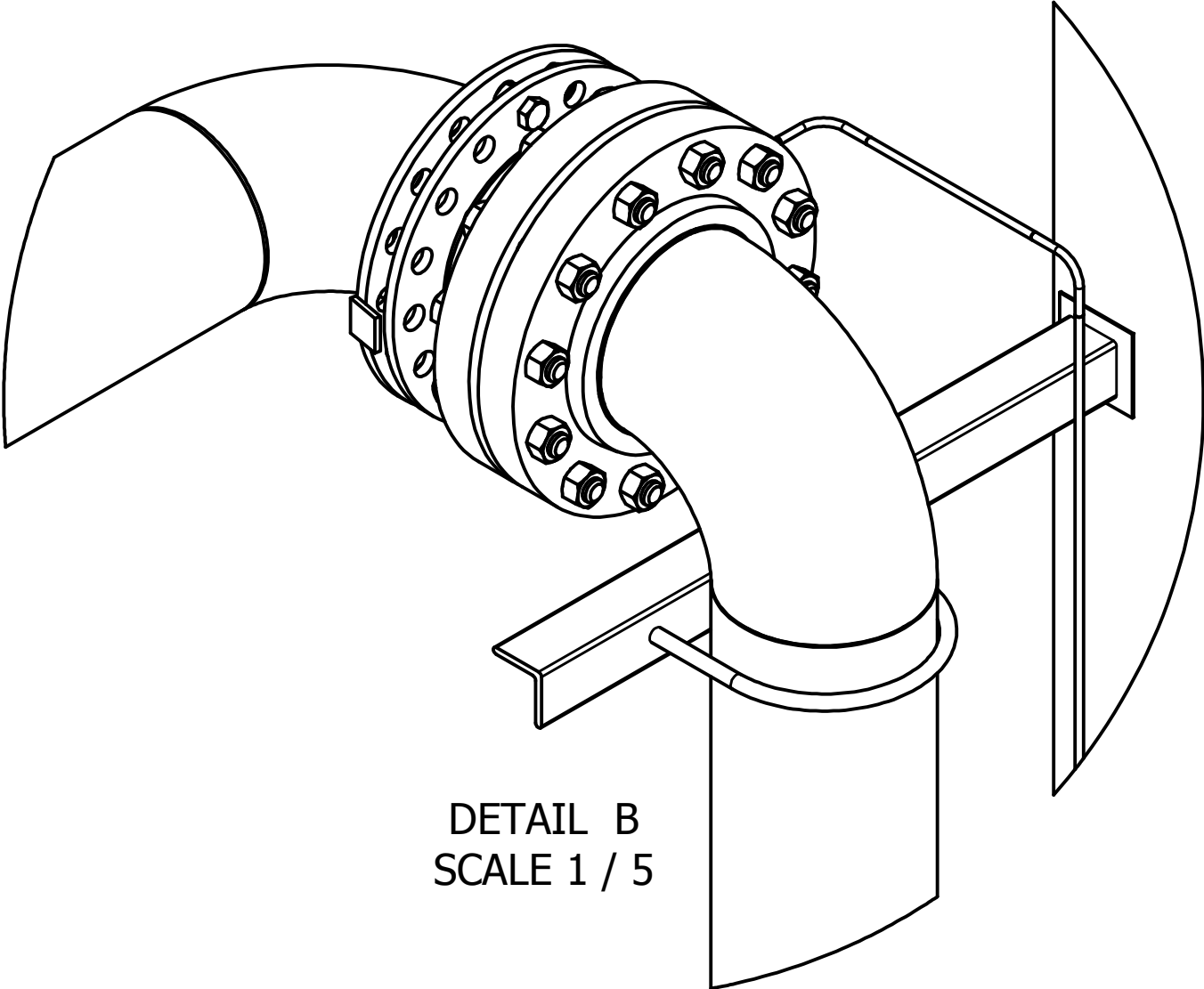
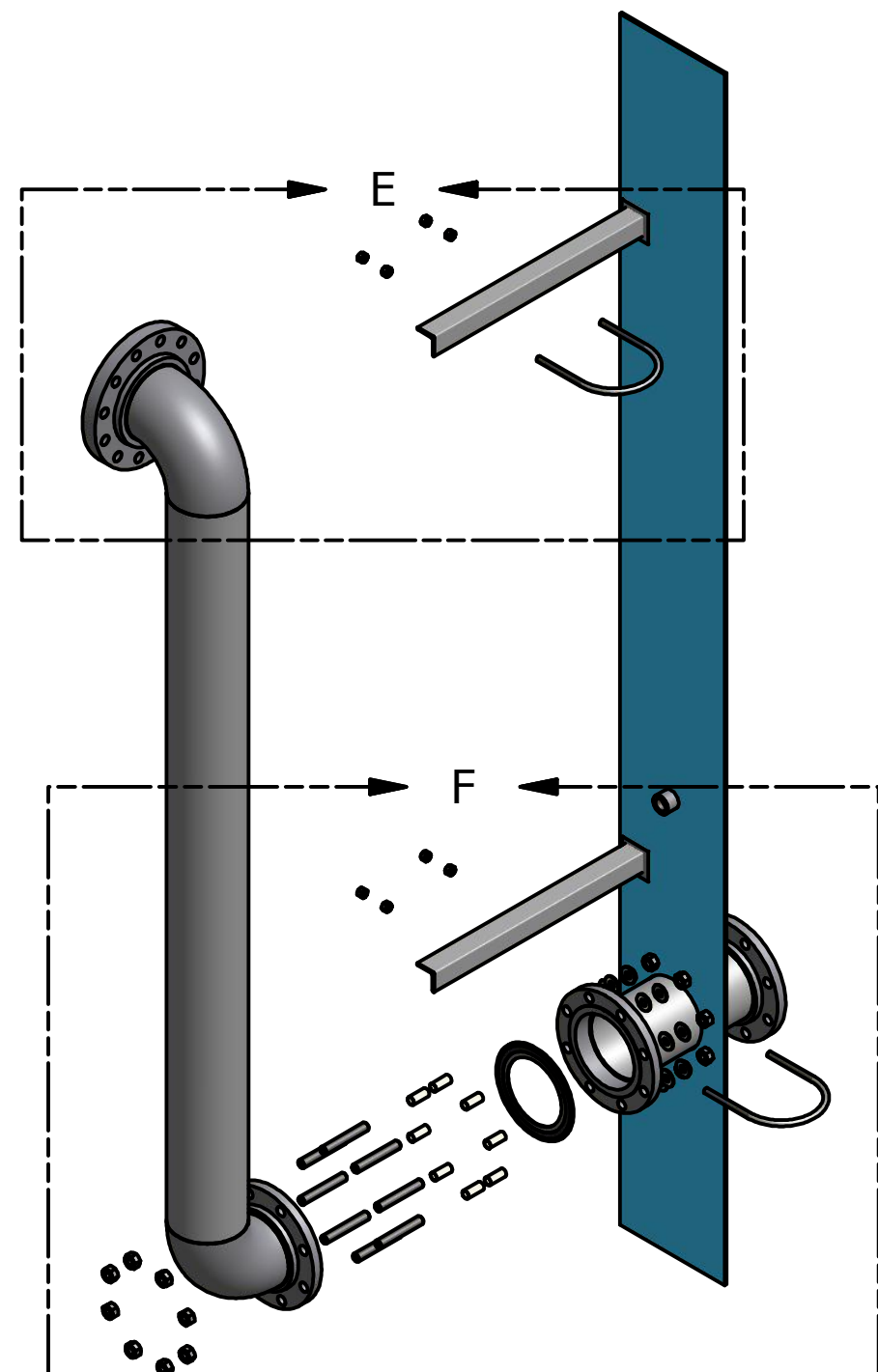
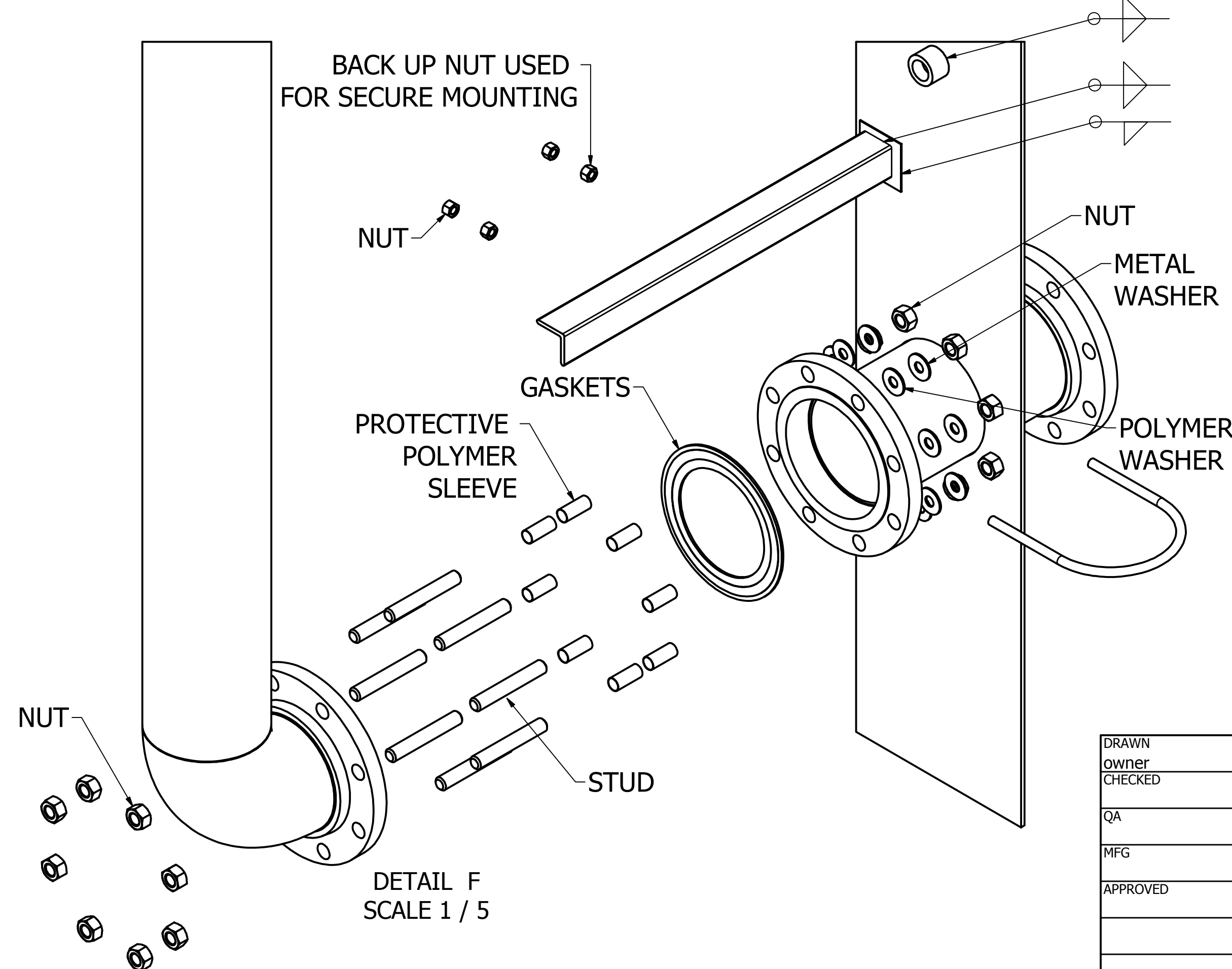
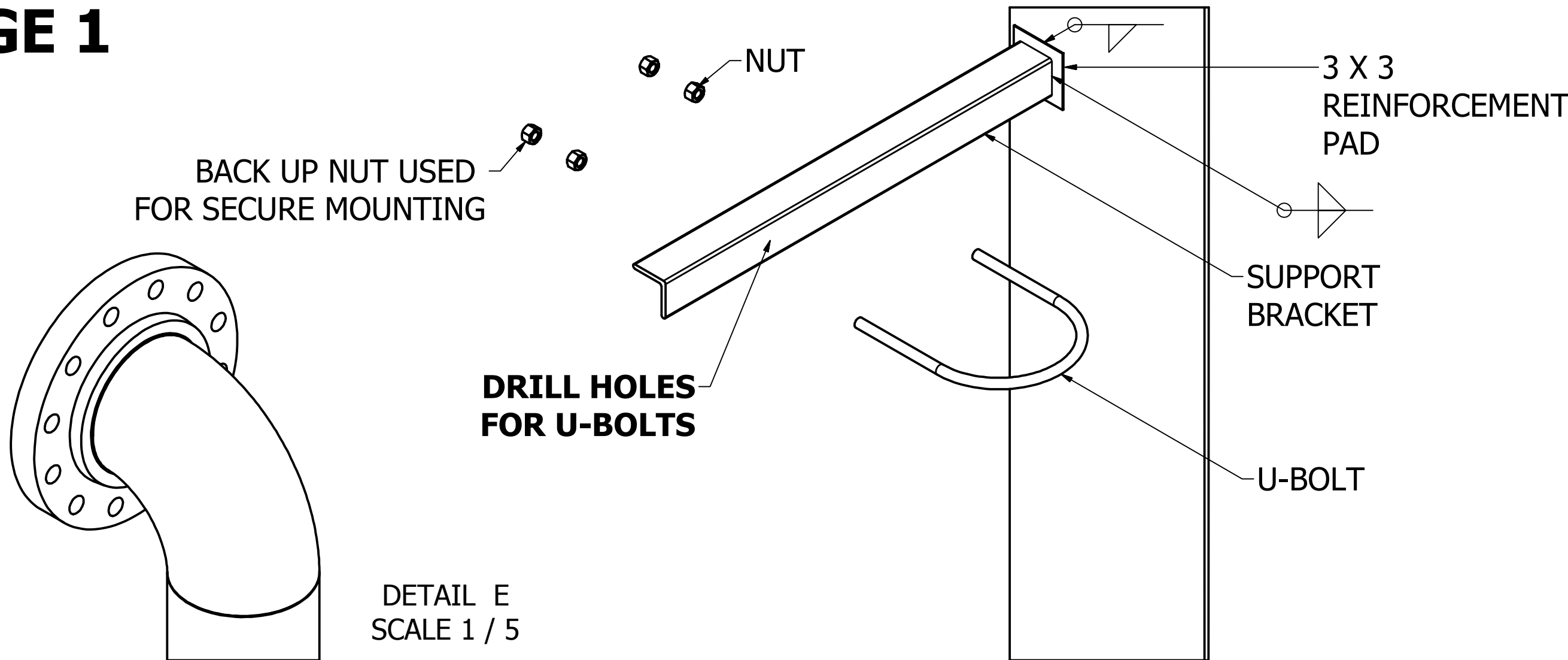


SKIM SYSTEM
OVERVIEW



DRAWN owner	18/09/2013	KENILOWRTH COMBUSTION		
CHECKED		TITLE		
QA		6.00in Skim		
MFG		System_REFERENCE/INSTALLATION		
APPROVED		SIZE	DWG NO	REV
		C	6.00in Skim System_Assembly-1	
		SCALE	SHEET 2 OF 6	

STAGE 1

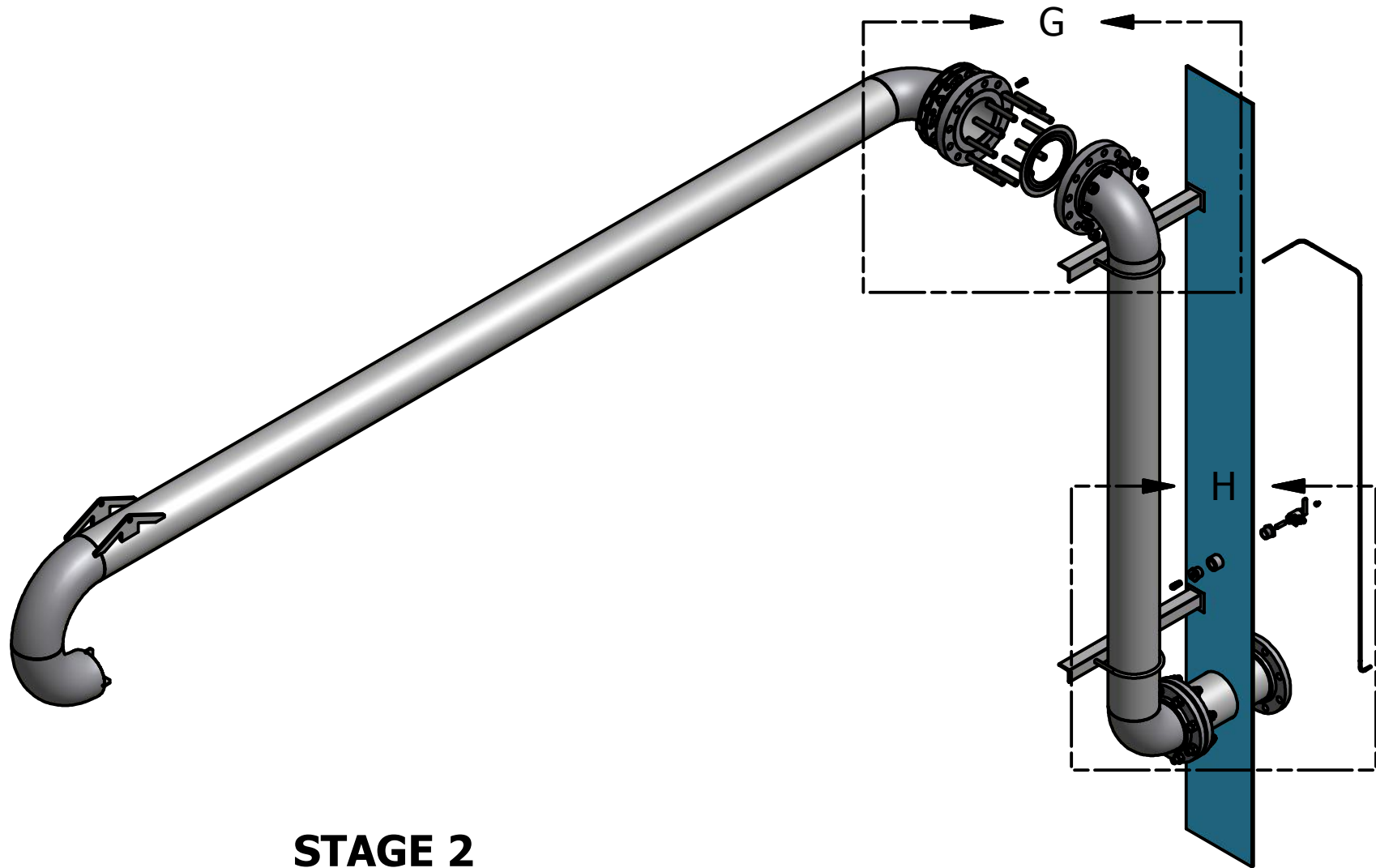
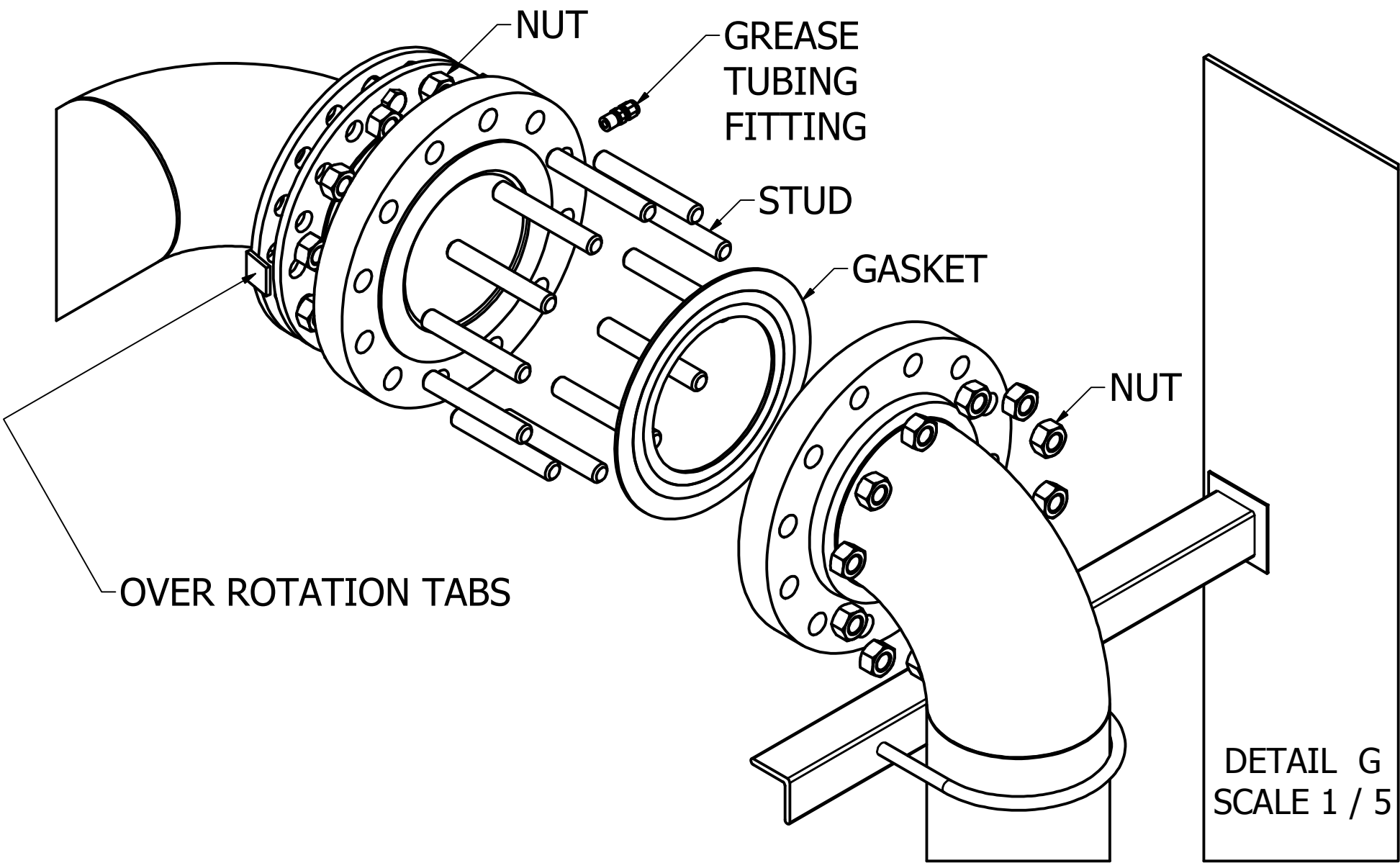


STAGE 1

- Step 1) Mount Riser to suction outlet flange. Follow the instructions found in the gasket kit to ensure that the tank coating is not damaged
- Step 2) Weld Support Bracket to Tank Wall (if not already installed)
- Step 3) Fasten the Riser to the Support Brackets using the supplied U-Bolts
- Step 4) Weld the 1" Collar onto the Tank Wall (if not already installed)

DRAWN	owner	18/09/2013	KENILOWRTH COMBUSTION		
CHECKED					
QA					
MFG					
APPROVED			TITLE		
			6.00in Skim		
			System_REFERENCE/INSTALLATION		
			SIZE	DWG NO	REV
			C	6.00in Skim System_Assembly-1	
			SCALE	SHEET 3 OF 6	

STAGE 2

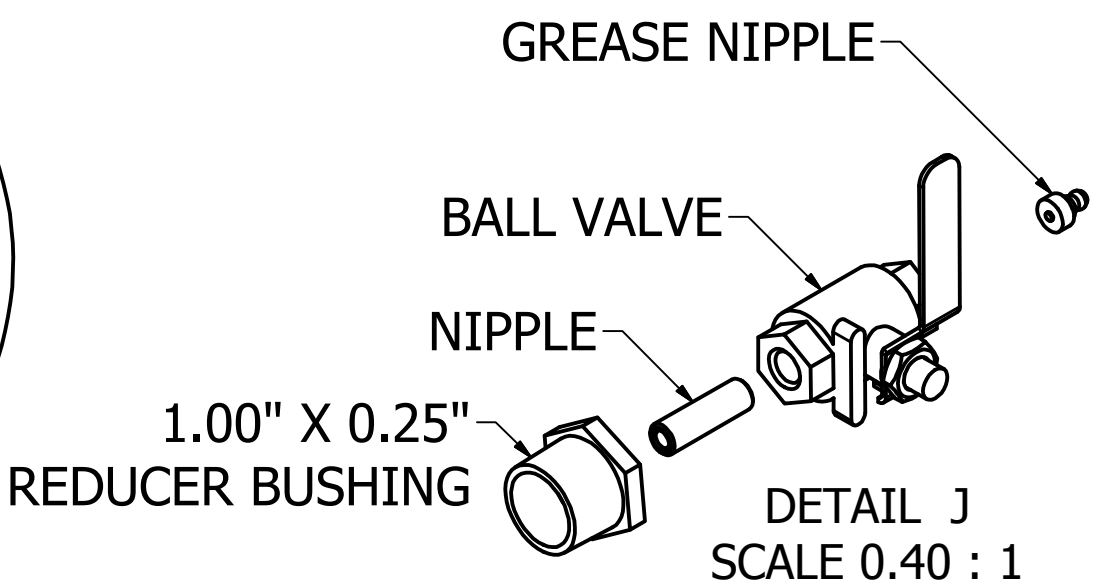
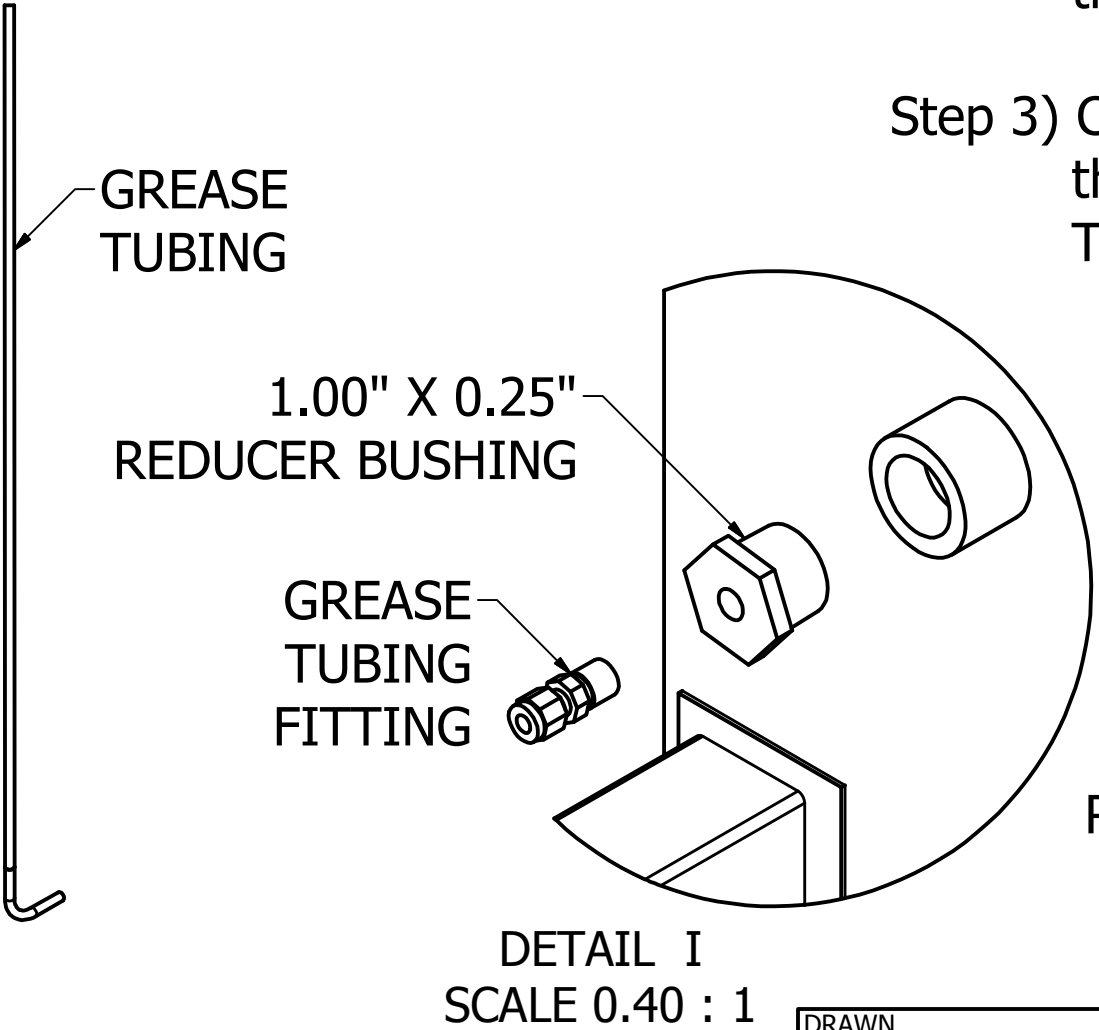
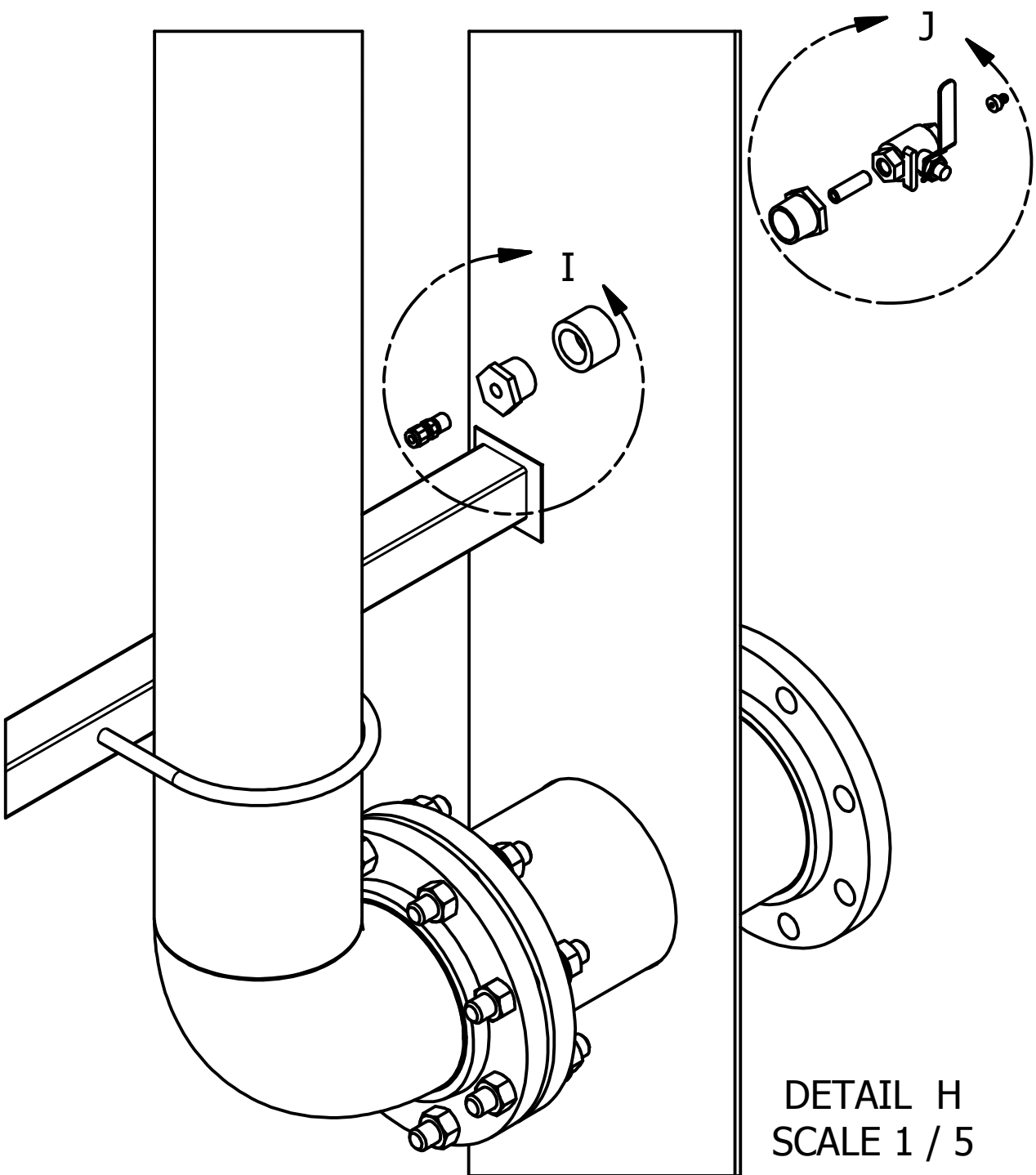


STAGE 2

Step 1) Connect the Chic Stand/Suction Arm assembly
*NOTE: Over rotation tabs must be 180deg apart and Grease Inlet must face the Tank Wall

Step 2) Adjust the Stopper Bolts so that the suction arm cannot touch the tank floor, but is positioned so that the float can easily be attached

Step 3) Connect the Grease Line assembly. This includes the Grease Nipple, Ball Valve, Reducer, and Tubing Fitting



DRAWN	owner	18/09/2013	KENILOWRTH COMBUSTION		
CHECKED			TITLE		
QA			6.00in Skim		
MFG			System_REFERENCE/INSTALLATION		
APPROVED			SIZE	DWG NO	REV
			C	6.00in Skim System_Assembly-1	
			SCALE	SHEET 4 OF 6	

STAGE 3

DETAIL K
SCALE 1 / 10

DETAIL M
SCALE 1 / 4

DETAIL L
SCALE 1 / 10

DETAIL N
SCALE 1 / 4

FLOAT BRACKET WASHER

FLOAT BRACKET BOLT

DUAL FLOAT BRACKET

FLOAT
BRACKET
WASHER

STAGE 3

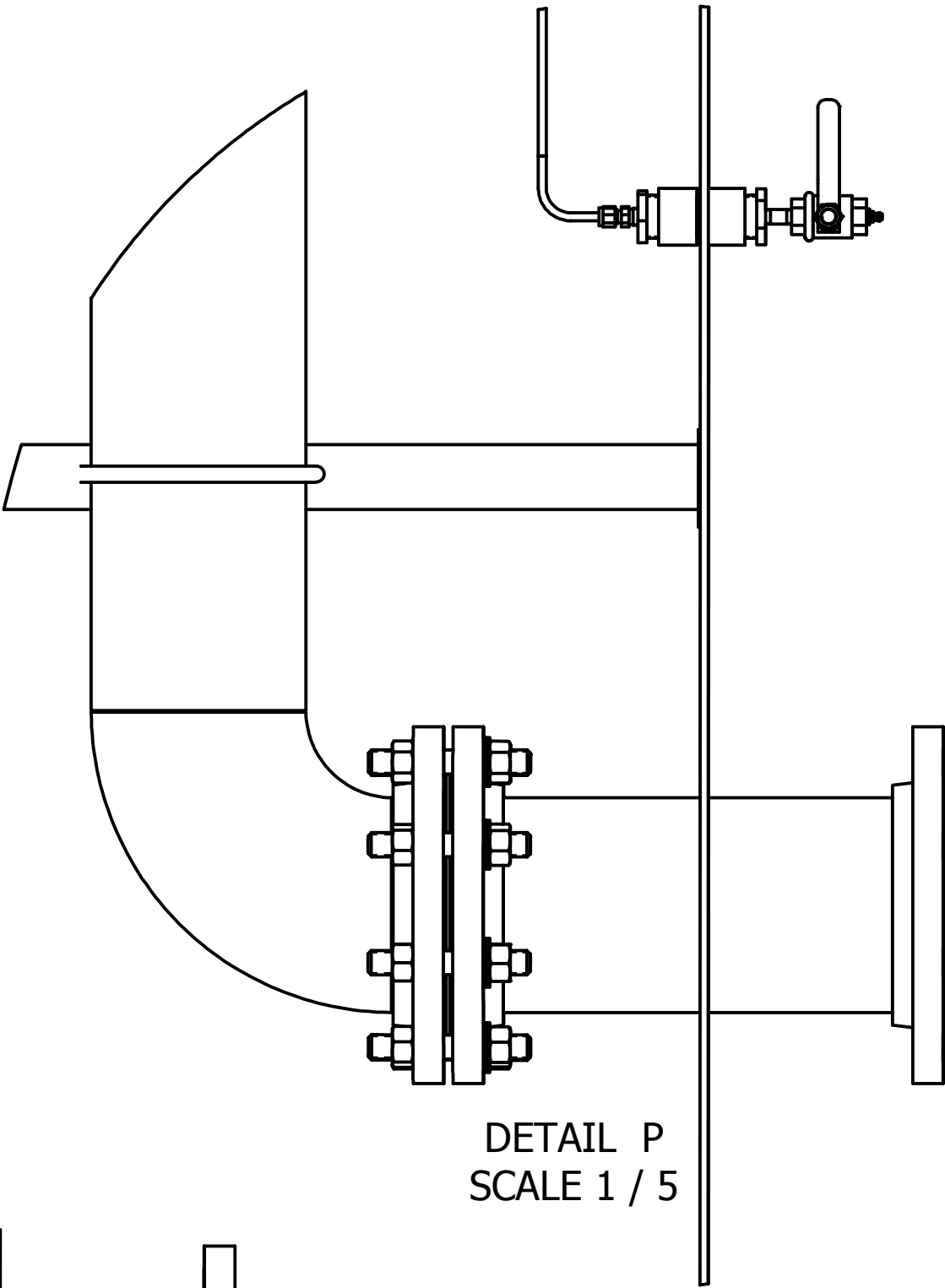
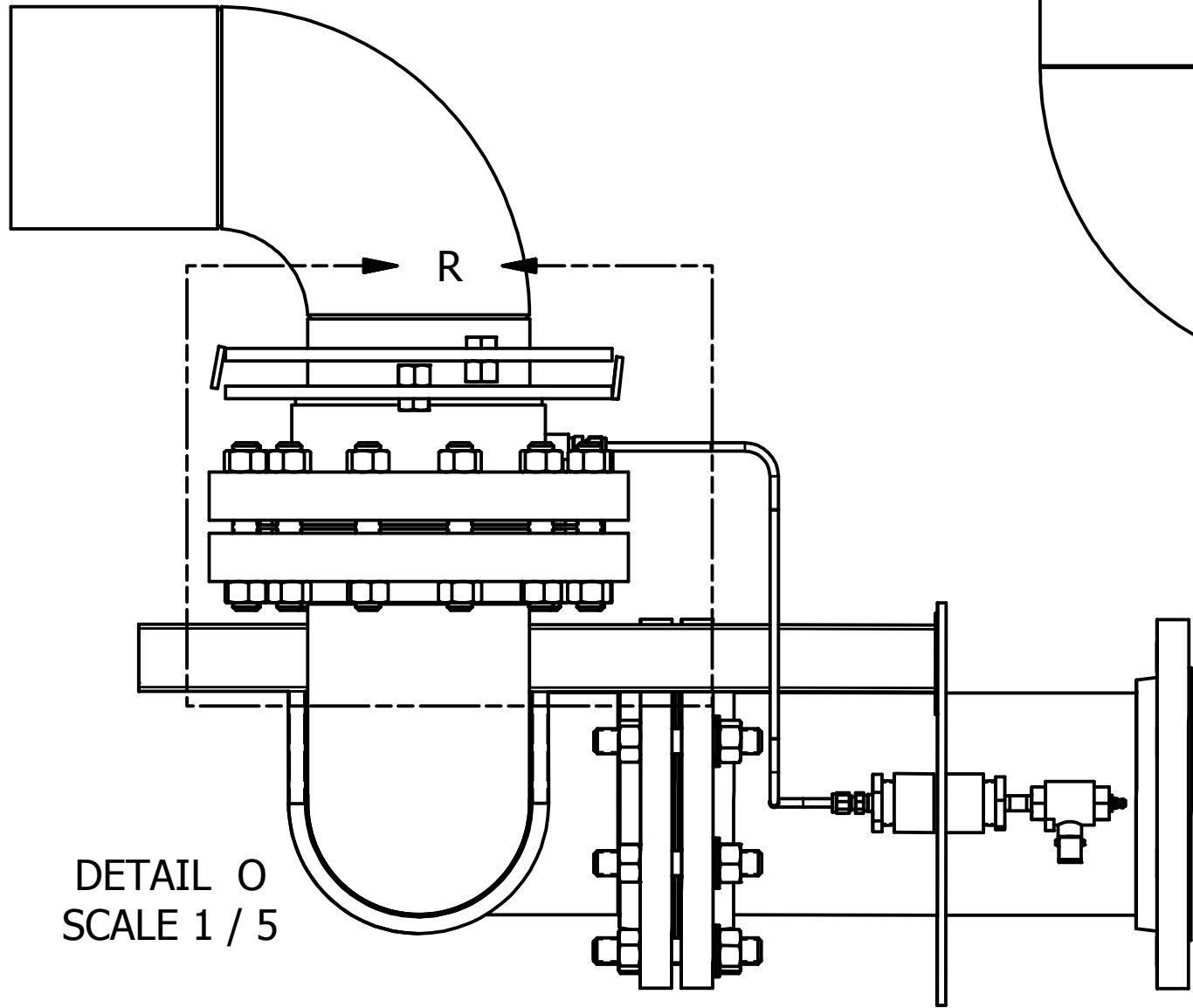
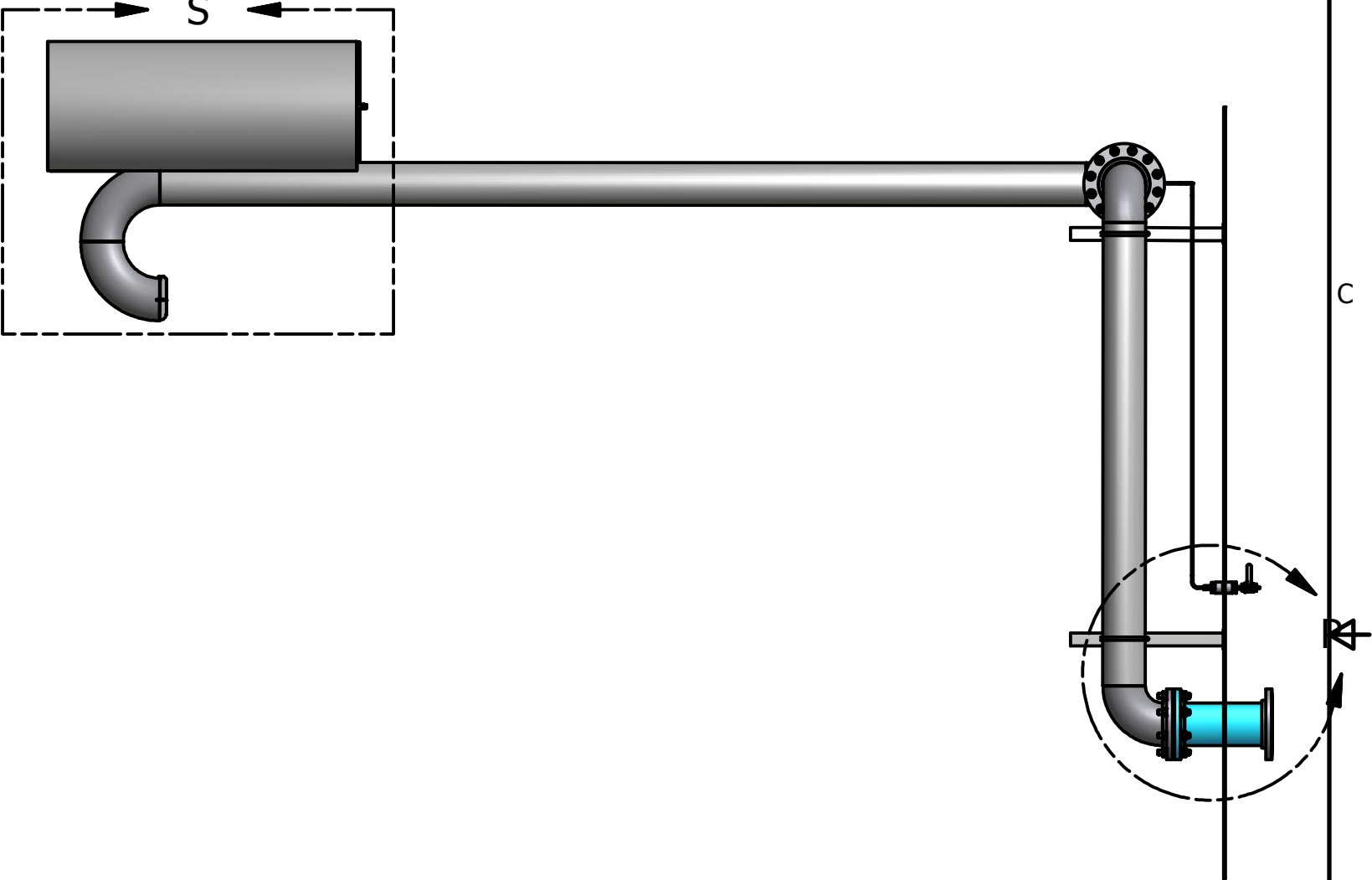
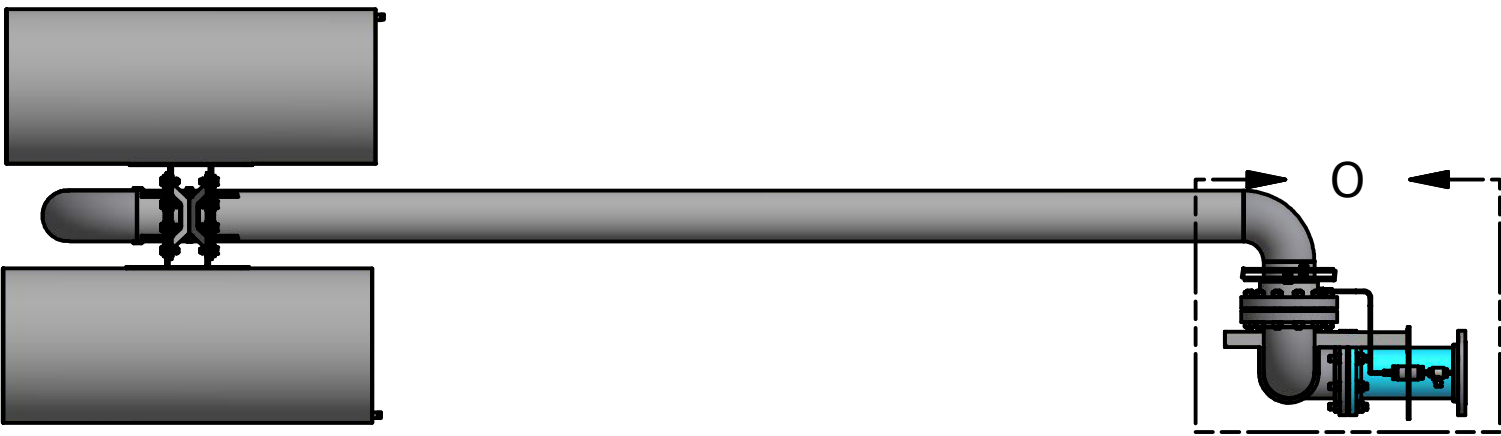
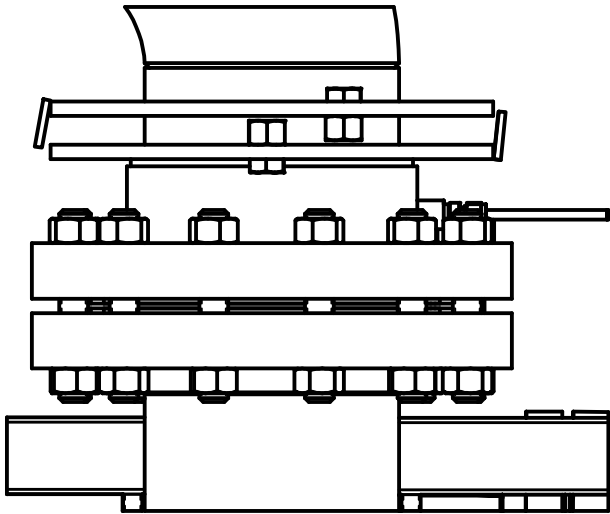
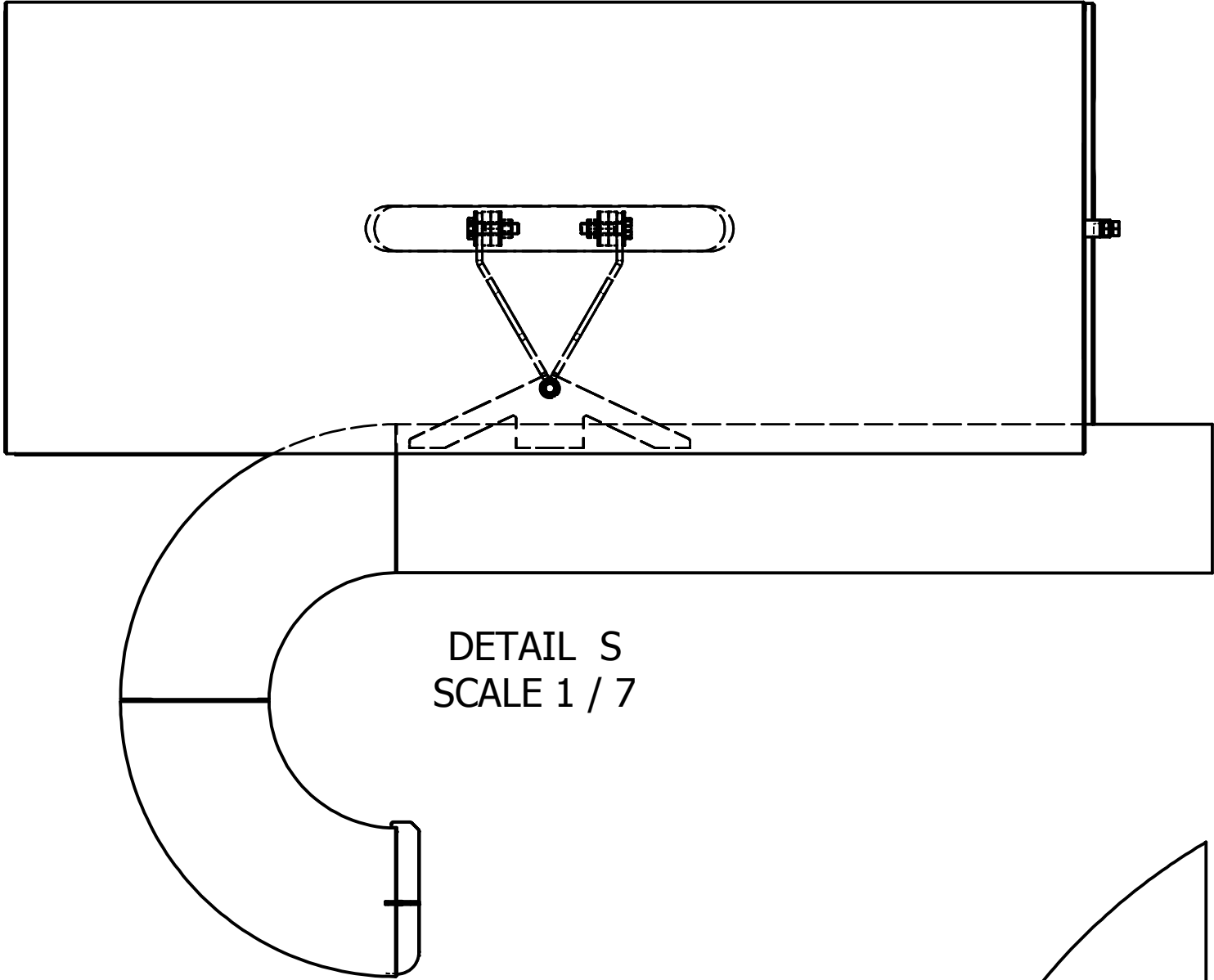
Step 1) Mount the Float to the Suction Arm tabs as per the illustrations
NOTE* The Suction Arm has been lowered to mount the Floats*

Step 2) Pump grease into the grease Nipple location on the outside of the tank until the systems is filled with grease

NOTE* Assemble the Dual Tank Assembly inside of the vessel, the assembly otherwise will not fit in through a standard tank door*

DRAWN	owner	18/09/2013	KENILOWRTH COMBUSTION		
CHECKED			TITLE		
QA			6.00in Skim		
MFG			System_REFERENCE/INSTALLATION		
APPROVED			SIZE	DWG NO	REV
			C	6.00in Skim System_Assembly-1	
			SCALE	SHEET 5 OF 6	

INSTALLATION



STAGE 4

- Step 1) Verify that all of the componenets have been tightened properly
- Step 2) Set the desired height of the Suction Arm
- Step 3) Ensure that the Stopper Bolts are tightened and set to the desired min height and max height

DRAWN owner	18/09/2013	KENILOWRTH COMBUSTION		
CHECKED		TITLE		
QA		6.00in Skim		
MFG		System_REFERENCE/INSTALLATION		
APPROVED		SIZE	DWG NO	REV
		C	6.00in Skim System_Assembly-1	
		SCALE	SHEET 6 OF 6	