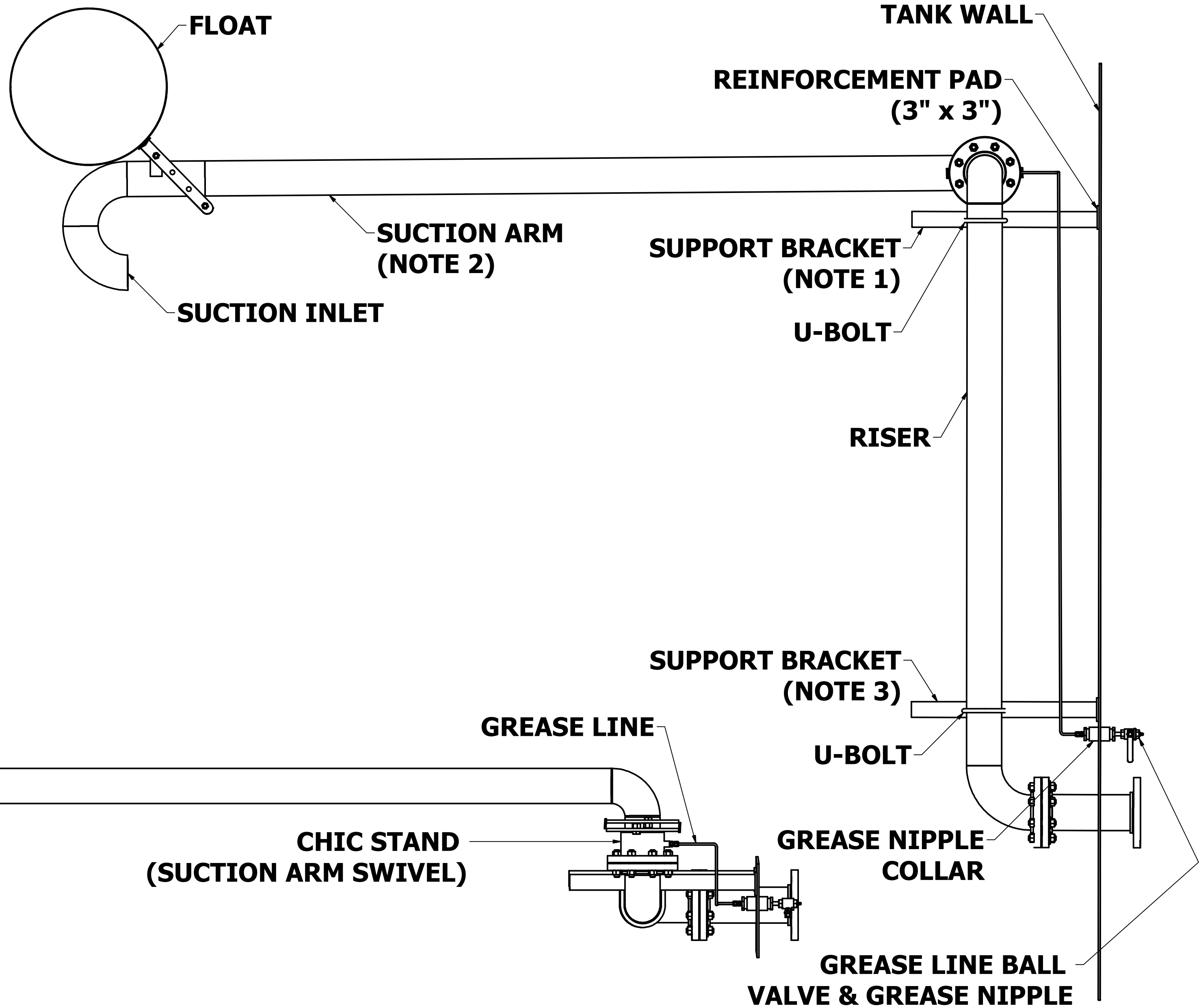


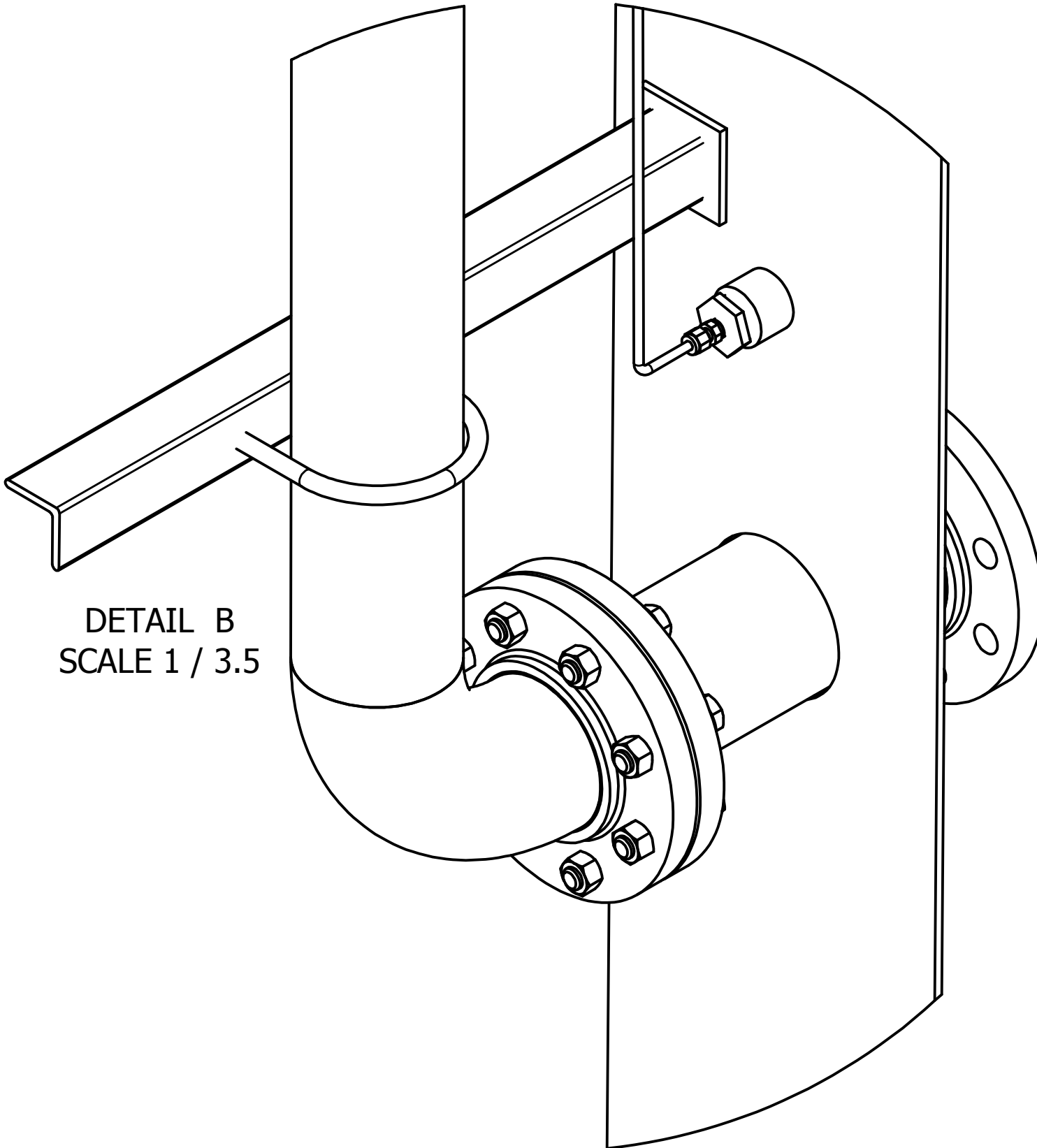
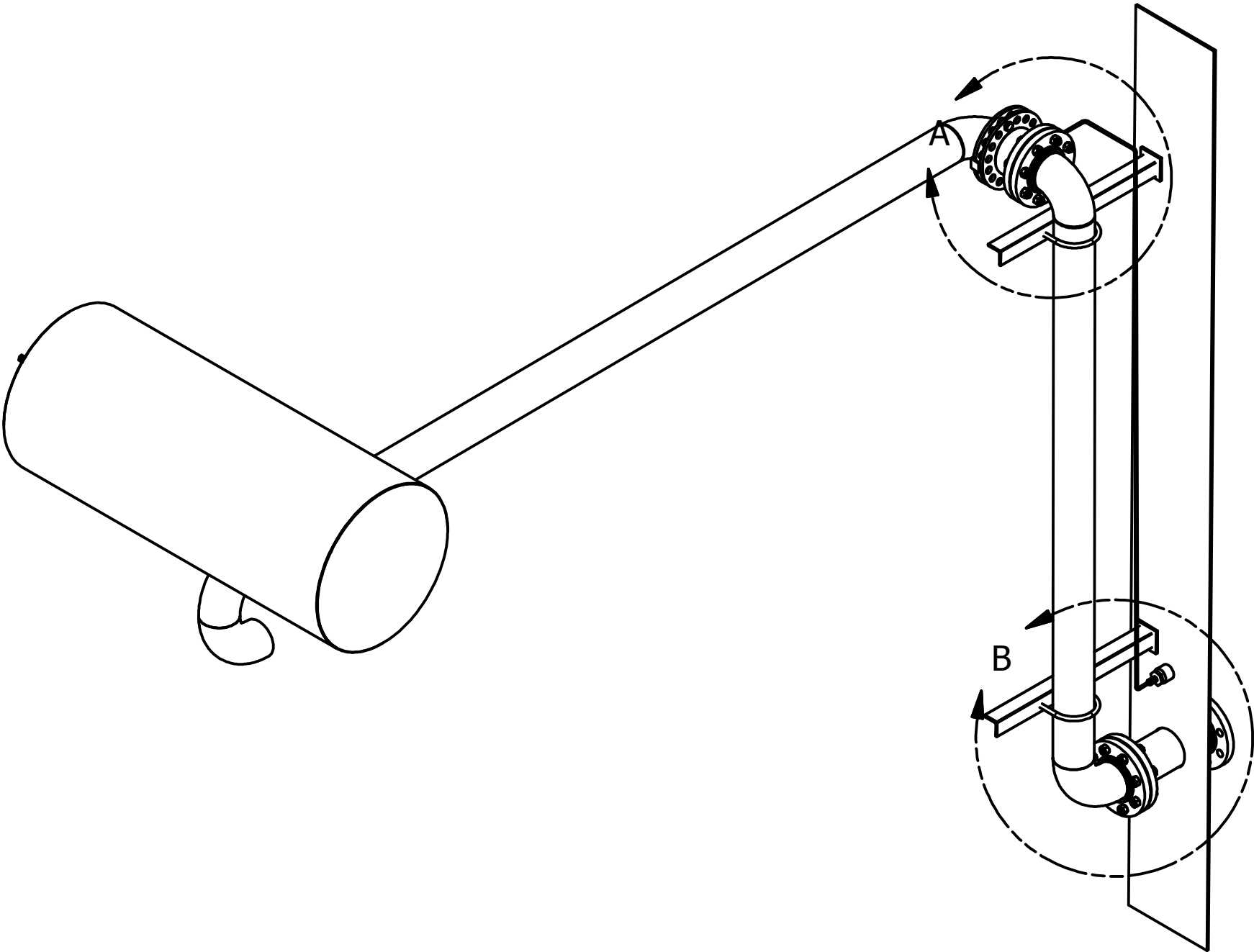
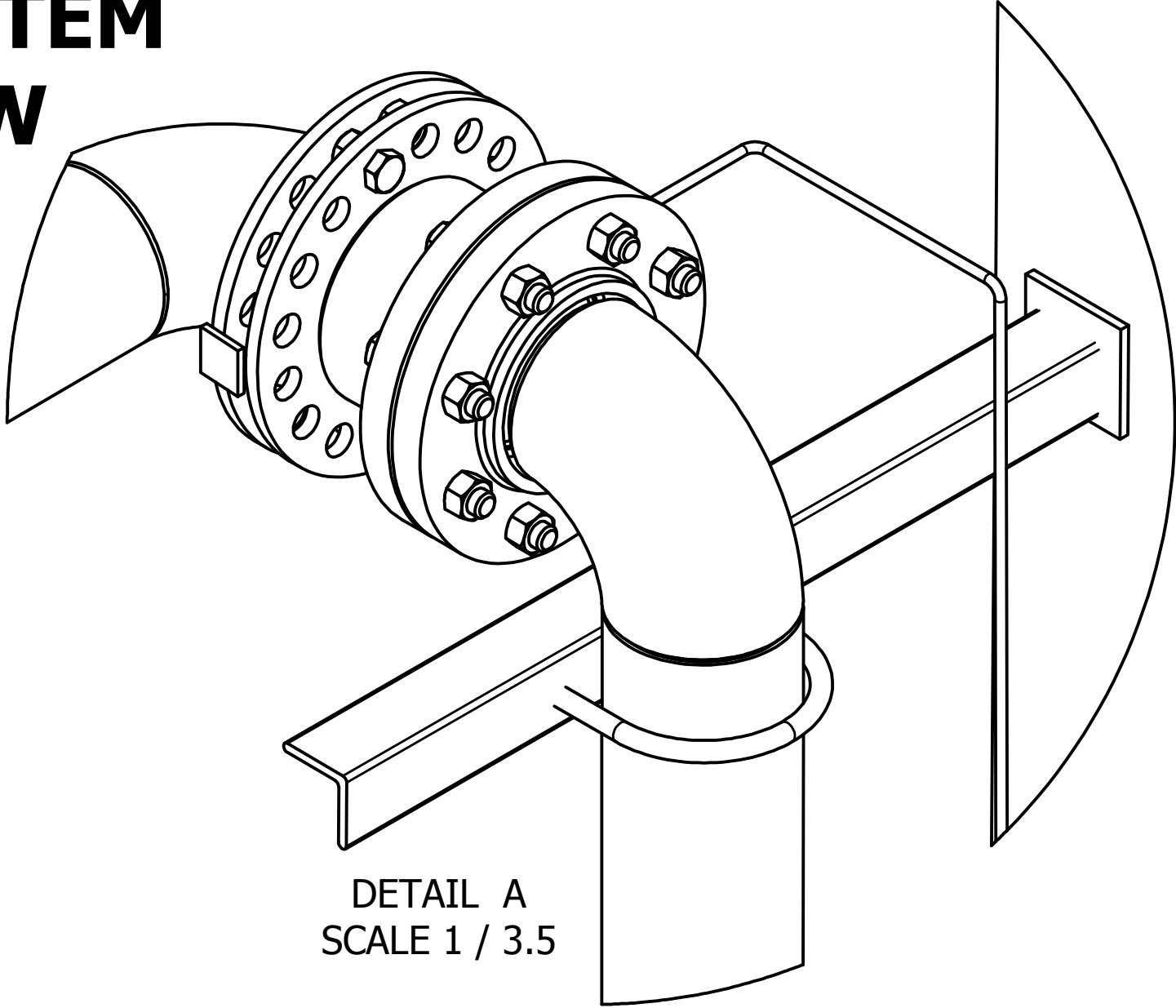
**SKIM SYSTEM OVERVIEW  
(4" SHOWN)**



**NOTE #1)** Top Riser Support Bracket must be mounted as close as possible to the Chic Stand  
**NOTE #2)** Positioning the Suction Arm below the Chic Stand may cause the pump to cavitate  
**NOTE #3)** Second Riser Support Bracket required if Riser length exceeds 8'

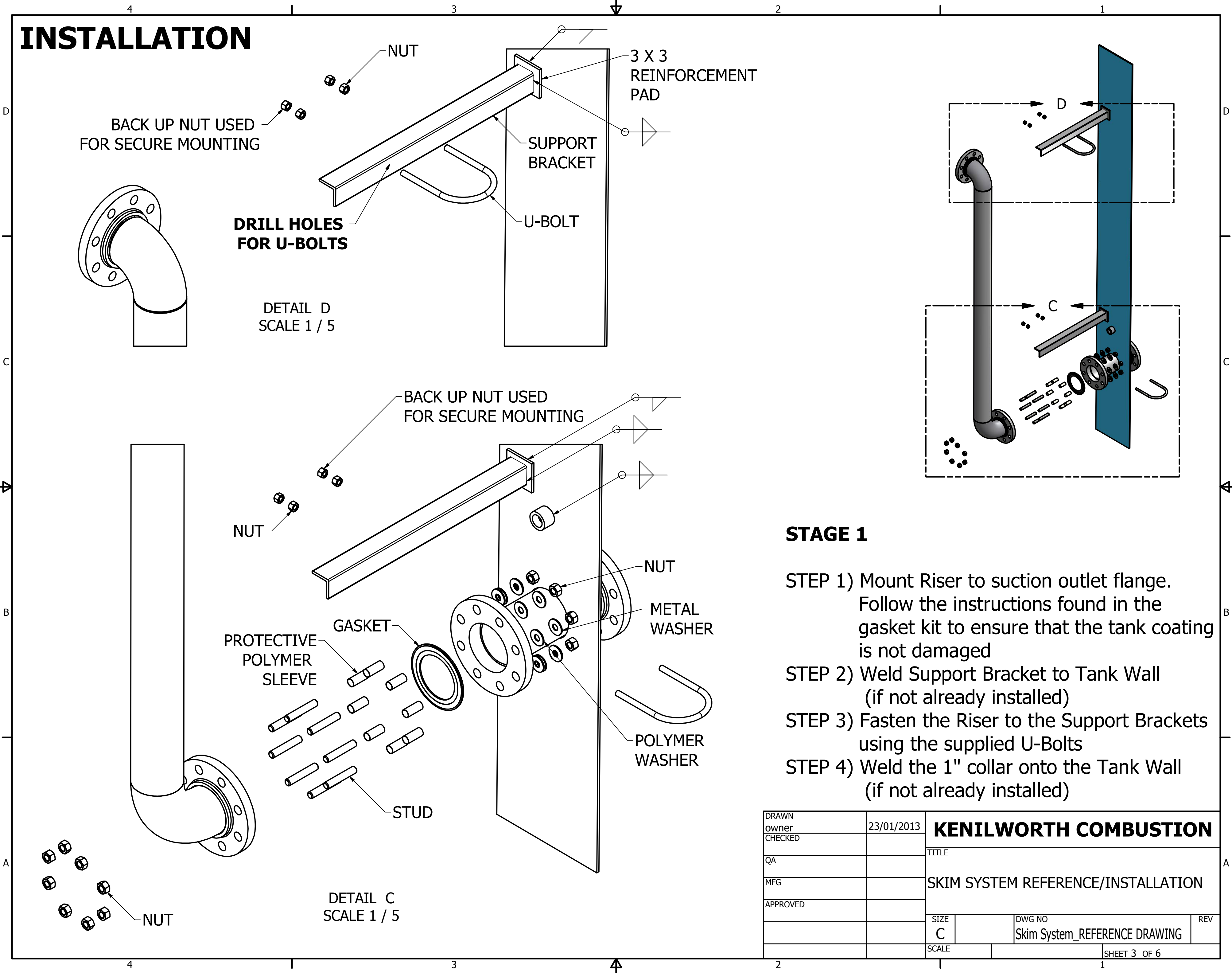
DRAWN owner	23/01/2013	<b>KENILWORTH COMBUSTION</b>		
CHECKED		TITLE		
QA		SKIM SYSTEM REFERENCE/INSTALLATION		
MFG		SIZE C	DWG NO Skim System_REFERENCE DRAWING	REV
APPROVED		SCALE	SHEET 1 OF 6	

SKIM SYSTEM  
OVERVIEW



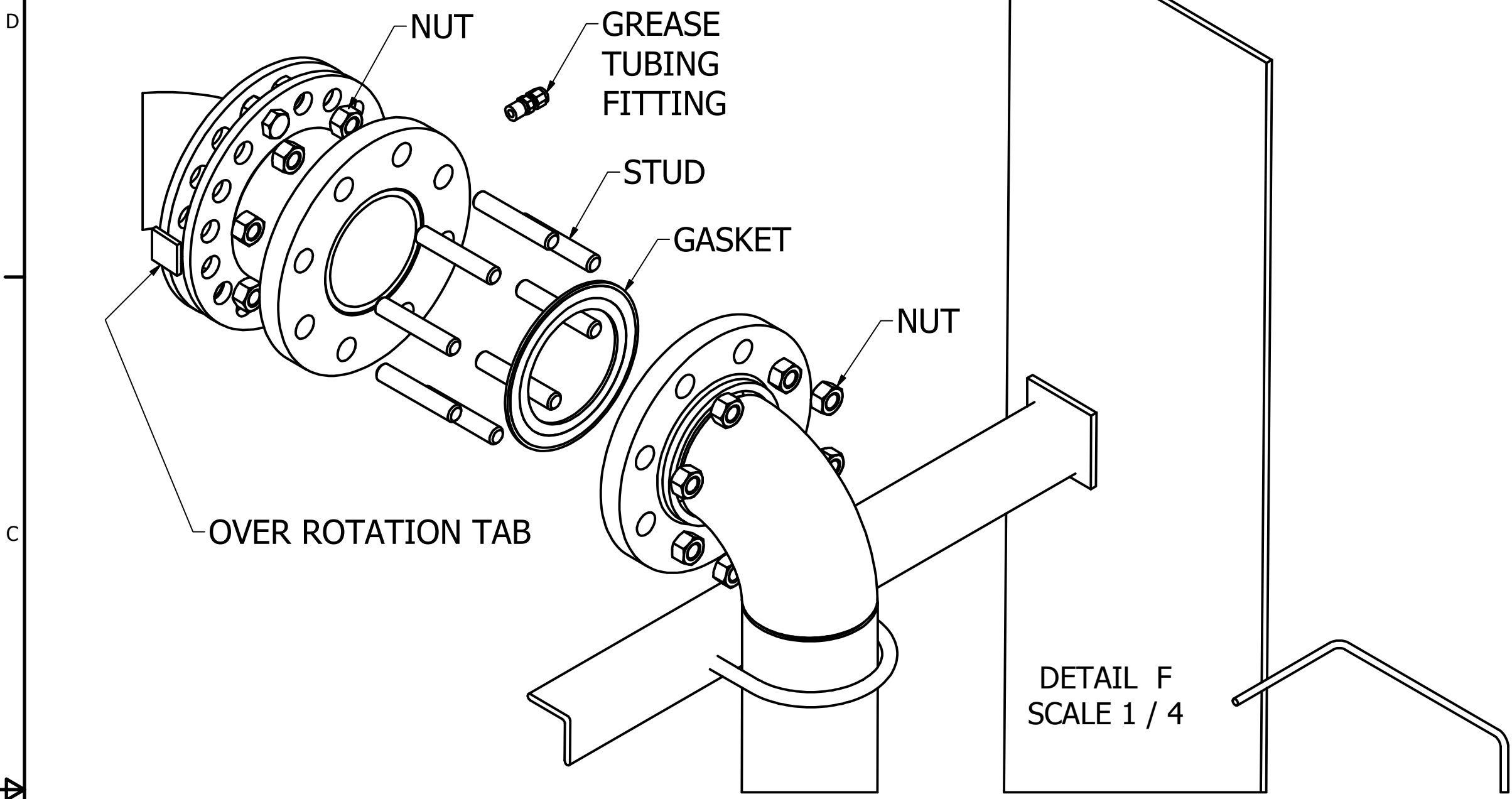
DRAWN owner	23/01/2013	KENILWORTH COMBUSTION		
CHECKED		TITLE		
QA		SKIM SYSTEM REFERENCE/INSTALLATION		
MFG				
APPROVED		SIZE C	DWG NO Skim System_REFERENCE DRAWING	REV
		SCALE	SHEET 2 OF 6	

INSTALLATION



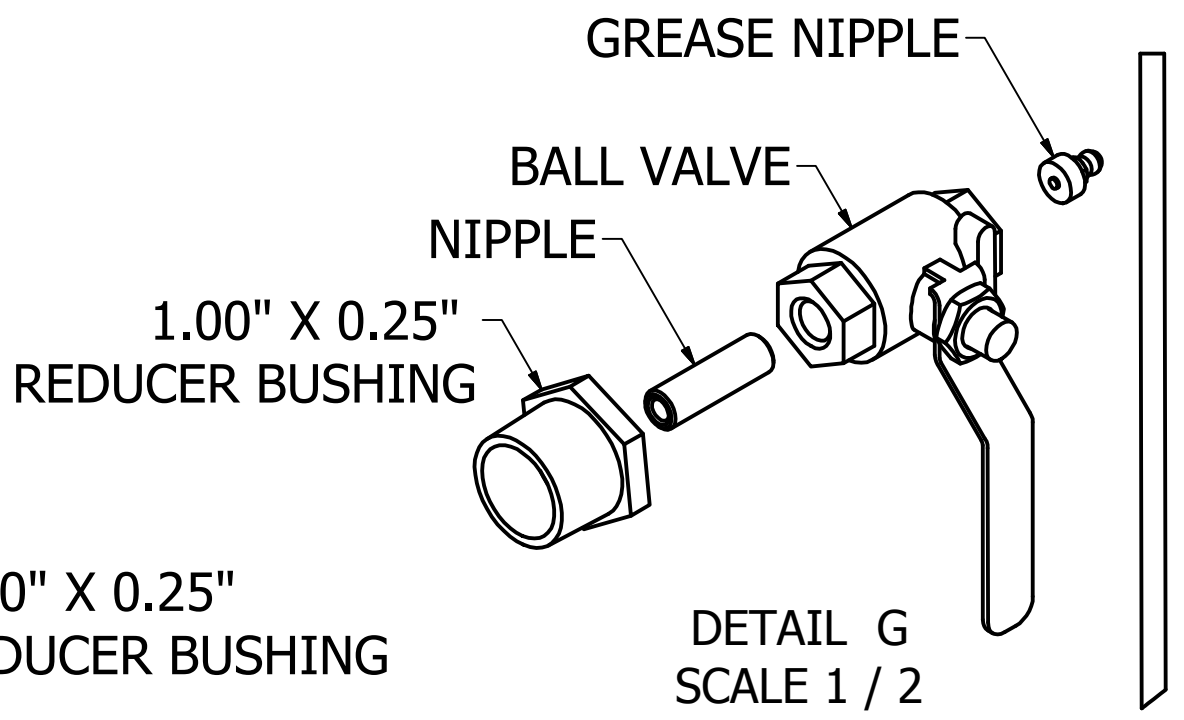
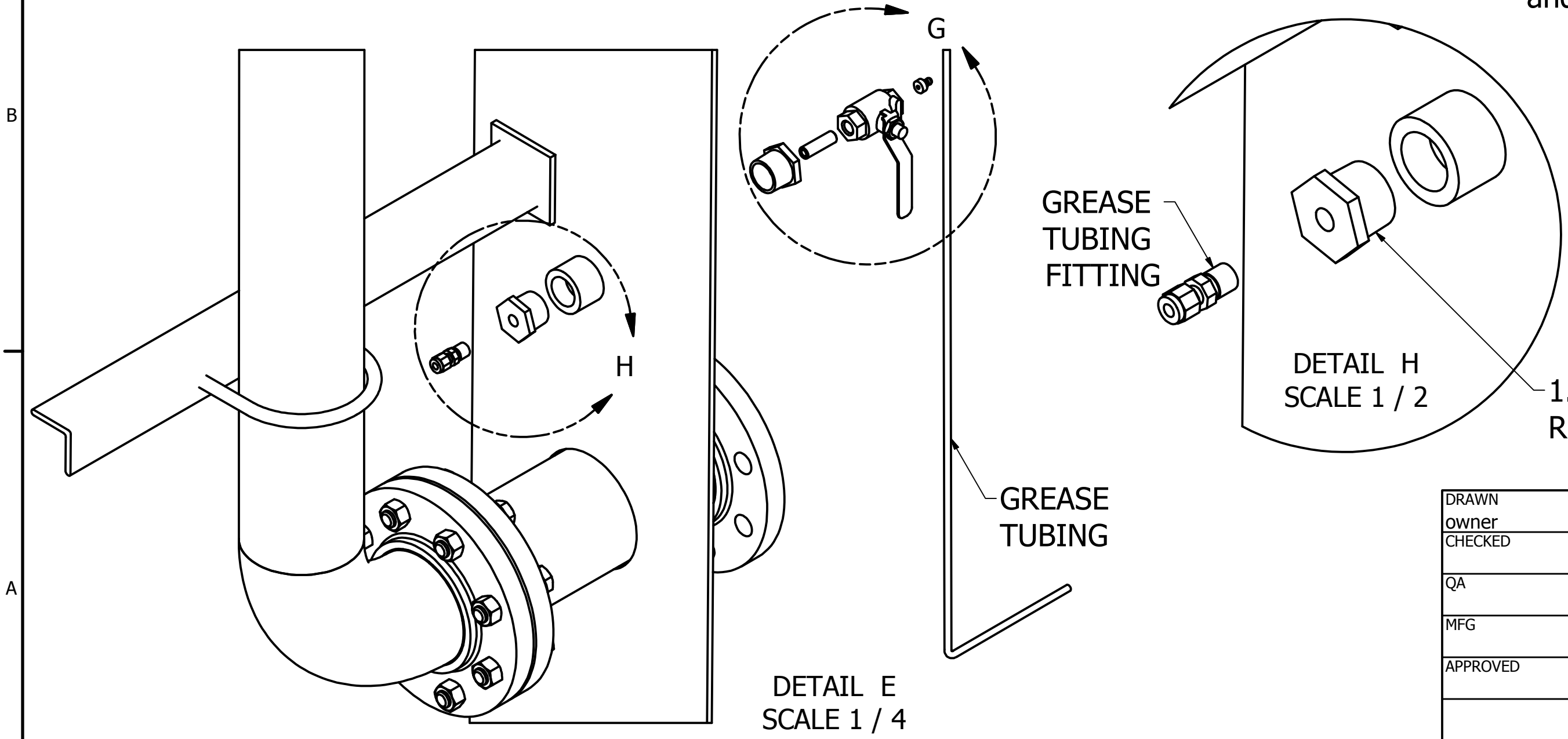
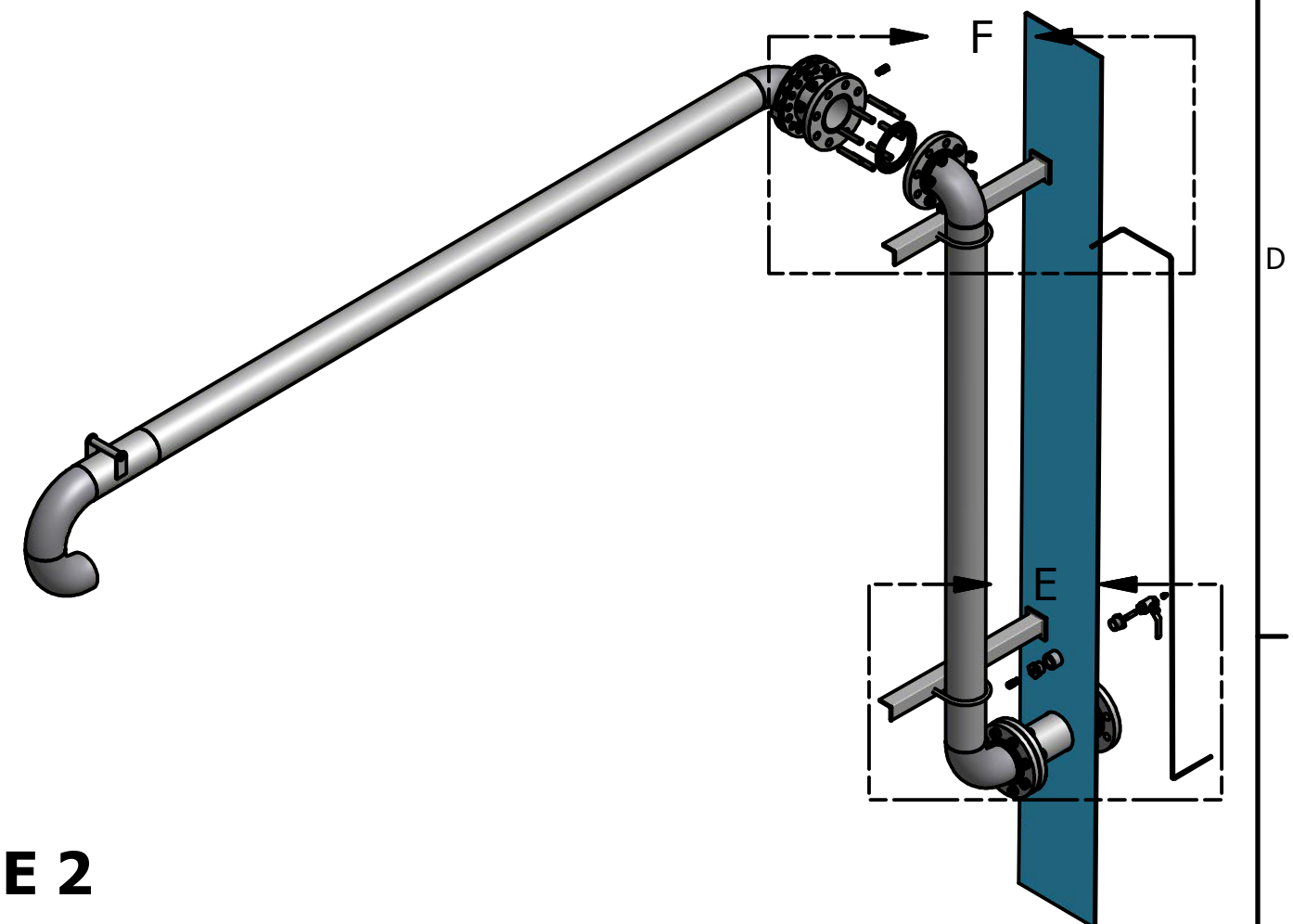
DRAWN	23/01/2013	<b>KENILWORTH COMBUSTION</b>		
owner		TITLE		
CHECKED				
QA				
MFG		SKIM SYSTEM REFERENCE/INSTALLATION		
APPROVED		SIZE	DWG NO	REV
		C	Skim System_REFERENCE DRAWING	
		SCALE	SHEET 3 OF 6	

INSTALLATION



STAGE 2

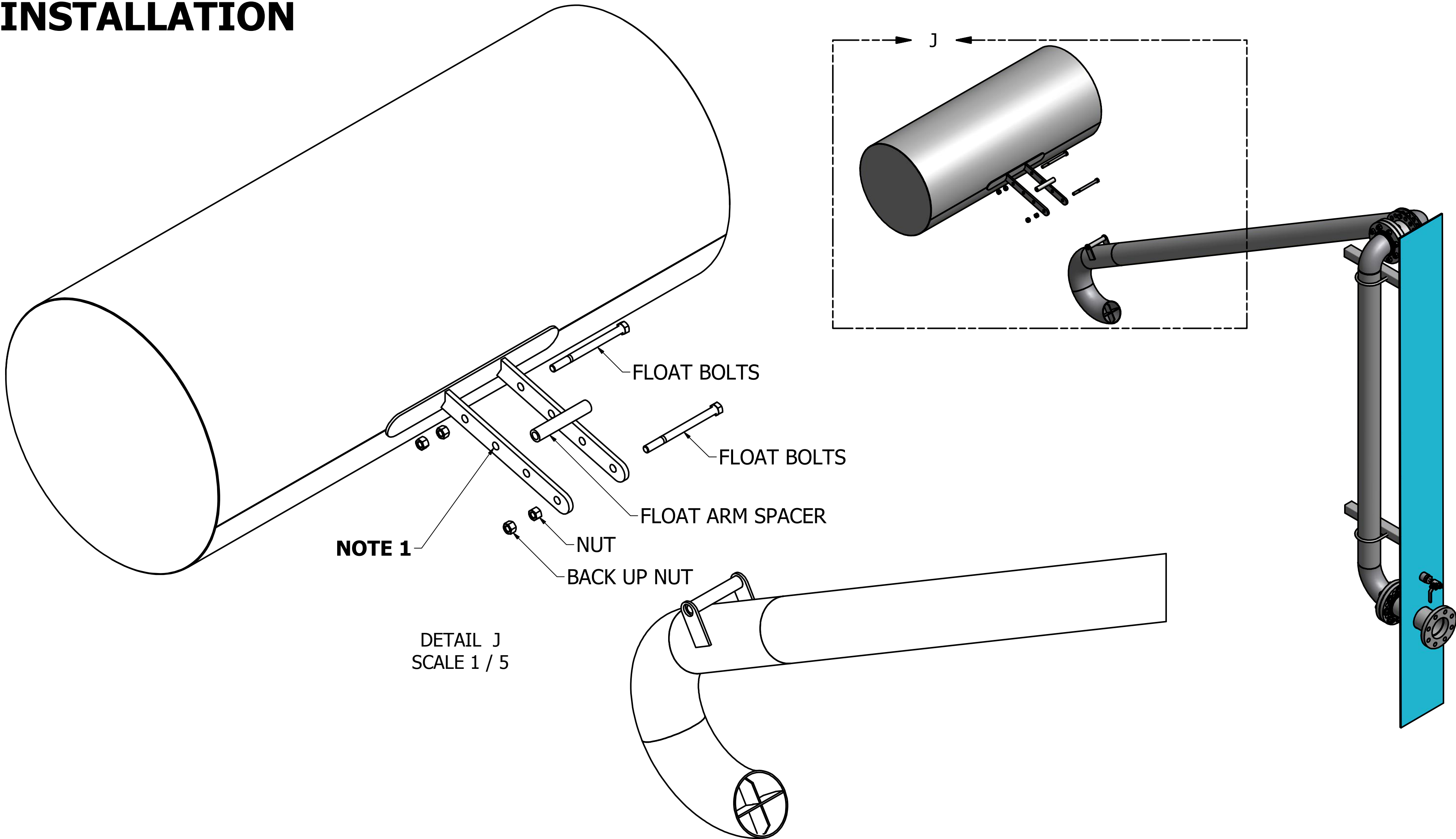
- Step 1) Connect the Chic Stand/Suction Arm assembly  
\*NOTE: Over rotation tabs must be 180deg apart and Grease Inlet must face the Tank Wall
- Step 2) Adjust the Stopper Bolts so that the suction arm cannot touch the tank floor, but is positioned so that the float can easily be attached
- Step 3) Connect the Grease Line assembly. This includes the Grease Nipple, Ball Valve, Nipple, Reducer, and Tubing Fitting.



DRAWN	owner	23/01/2013	<b>KENILWORTH COMBUSTION</b>		
CHECKED			TITLE		
QA			SKIM SYSTEM REFERENCE/INSTALLATION		
MFG			SIZE	DWG NO	REV
APPROVED			C	Skim System_REFERENCE DRAWING	
			SCALE	SHEET 4 OF 6	



# INSTALLATION



## STAGE 3

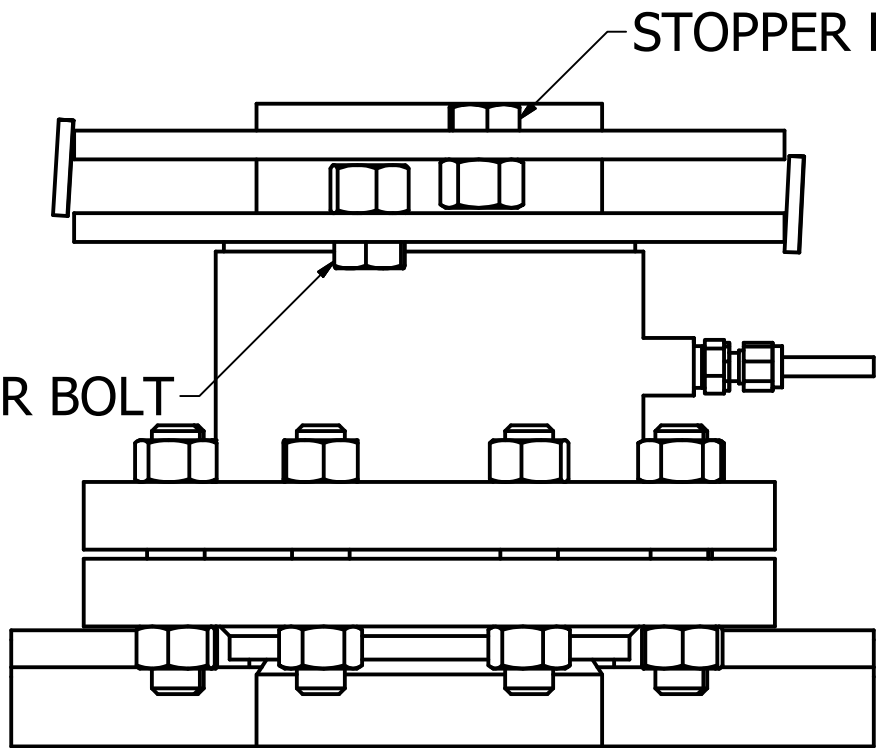
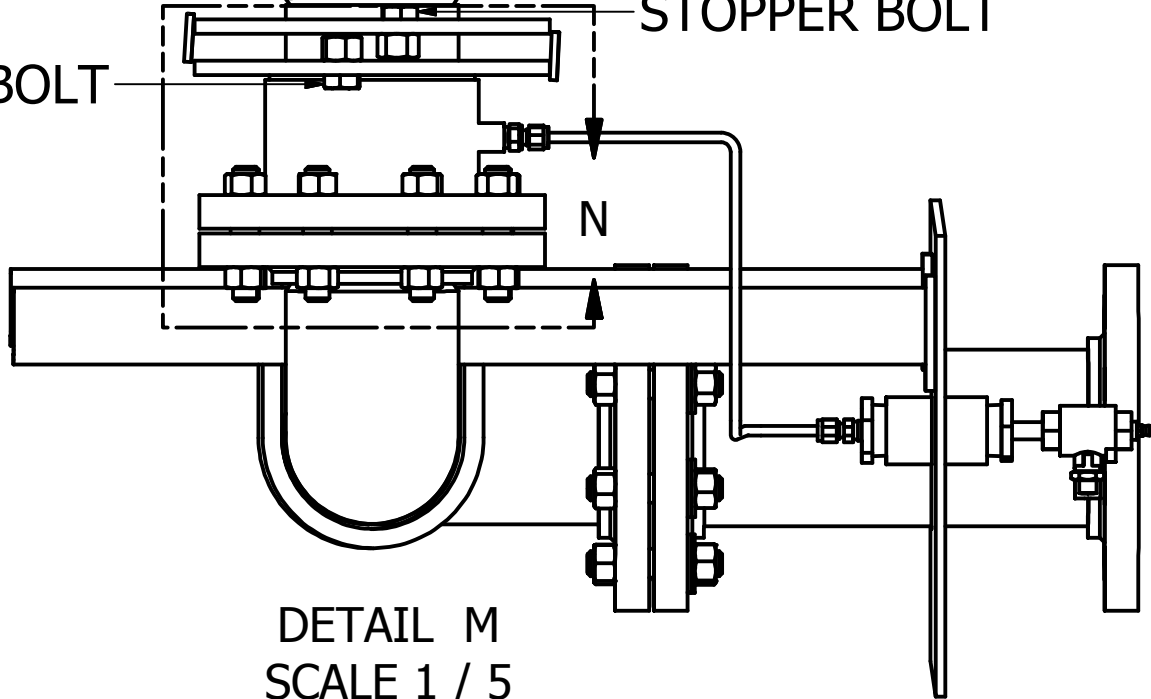
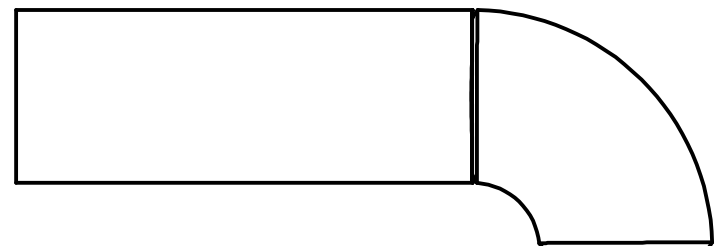
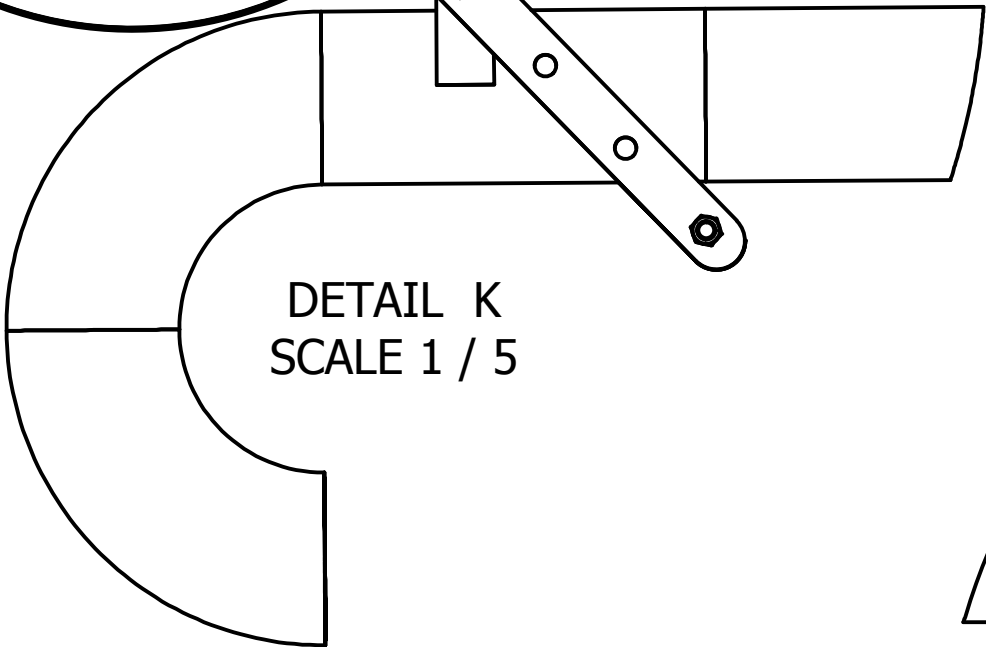
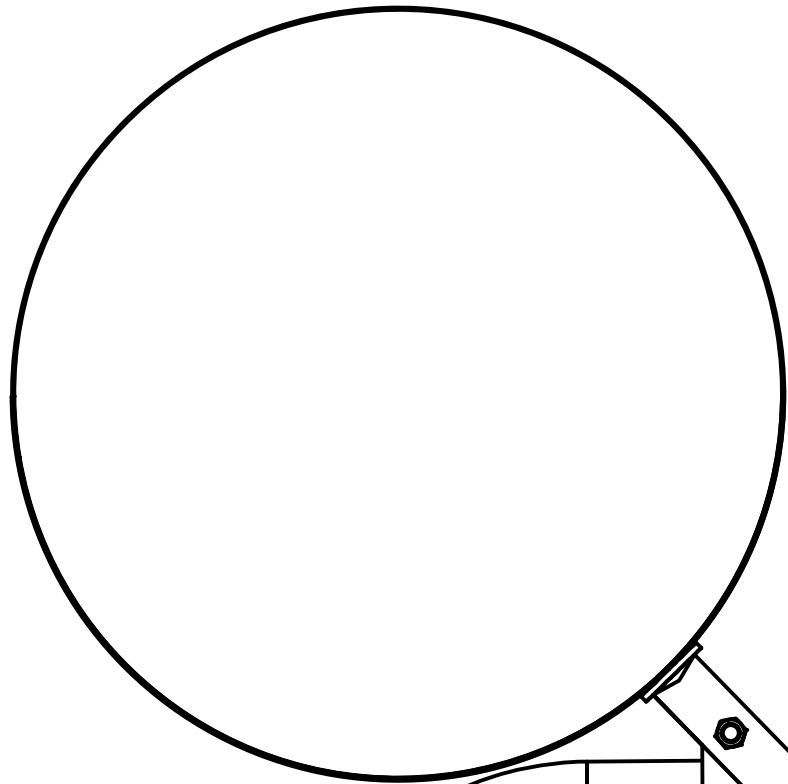
Step1) Mount the Float to the Suction Arm tabs as per the illustration  
NOTE\* The Suction Arm has been lowered to mount the Float\*

Step 2) Pump grease into the Grease Nipple located on the outside of  
the tank until the system is filled with grease

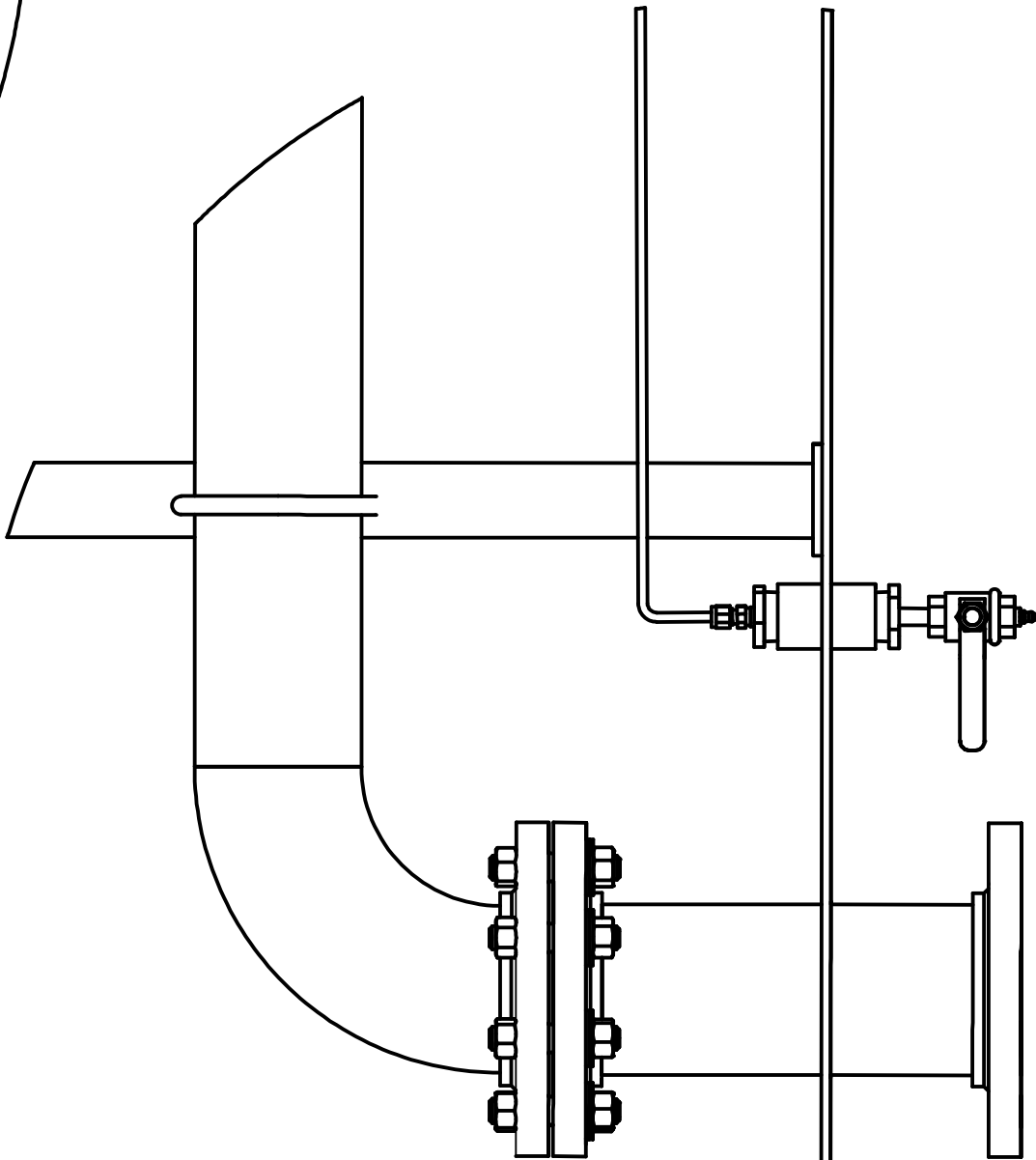
NOTE 1) Float mounting hole selection will effect the suction inlet  
submersion depth. Consider the submersion depth that is  
required before mounting the Float.

DRAWN owner	23/01/2013	<b>KENILWORTH COMBUSTION</b>		
CHECKED		TITLE		
QA		SKIM SYSTEM REFERENCE/INSTALLATION		
MFG		SIZE C	DWG NO Skim System_REFERENCE DRAWING	REV
APPROVED		SCALE	SHEET 5 OF 6	

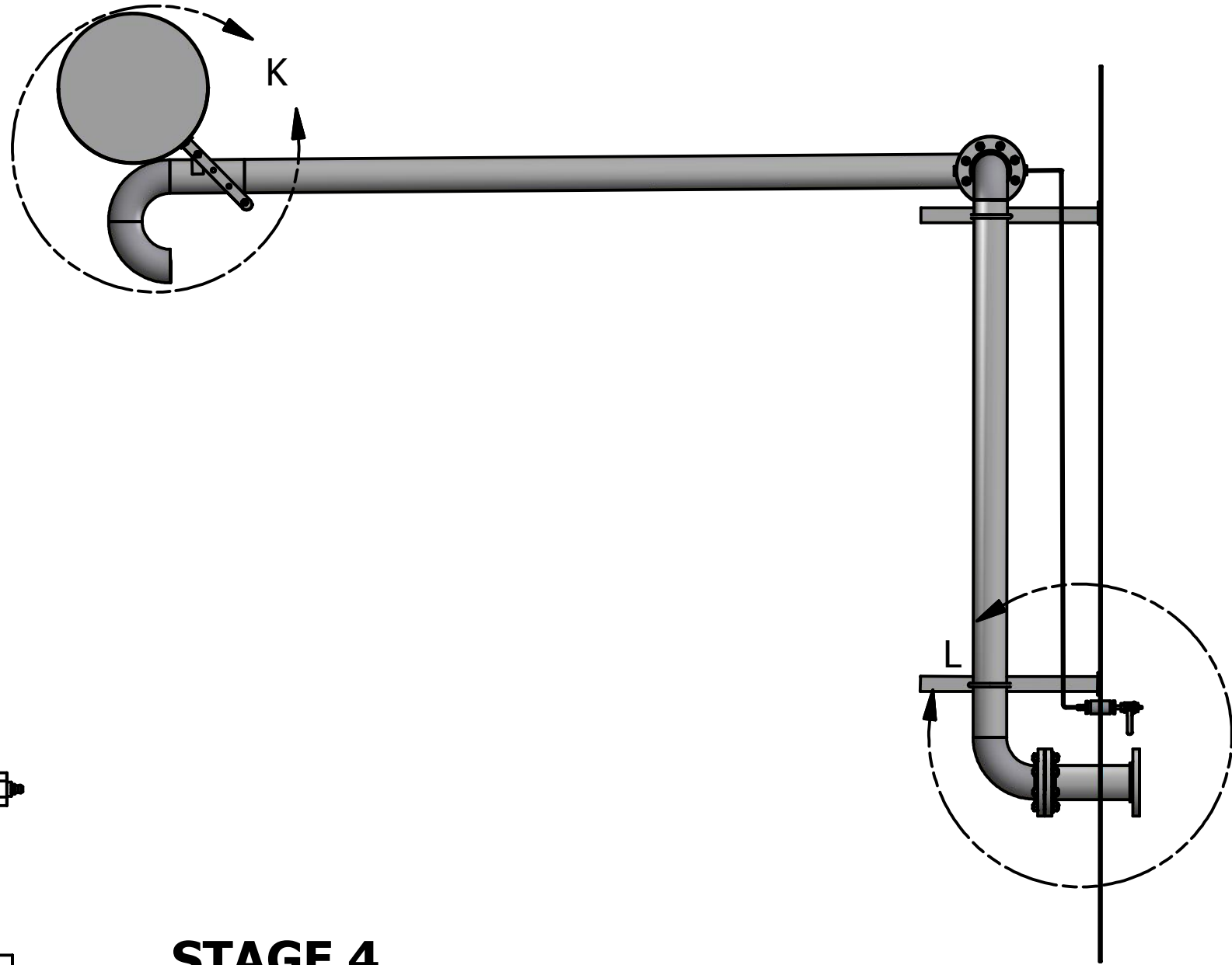
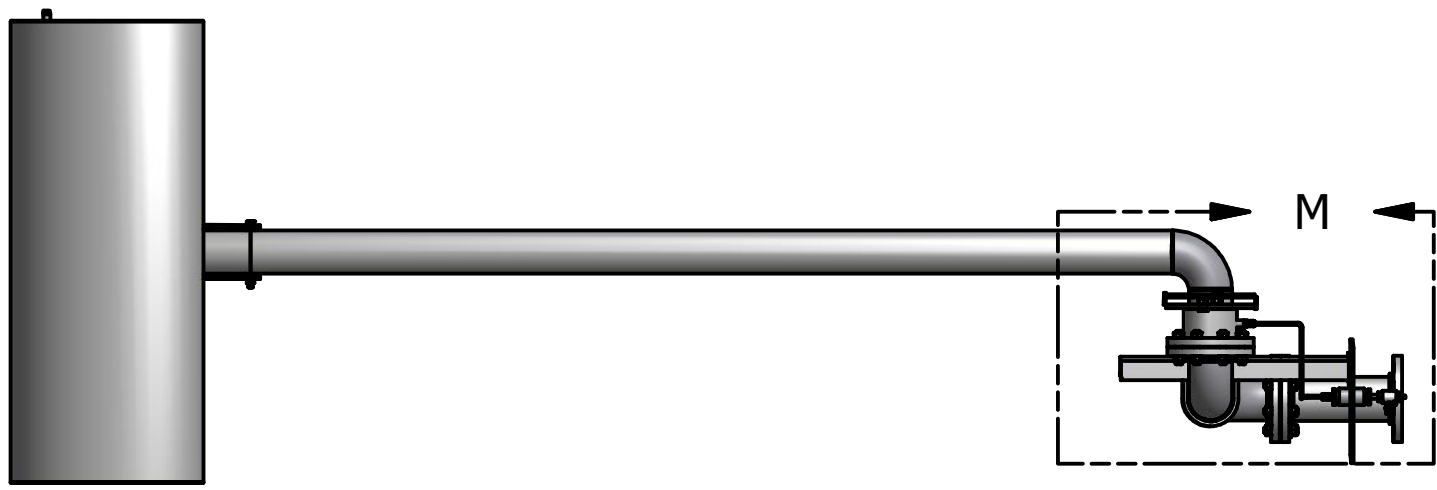
INSTALLATION



DETAIL N  
SCALE 0.40 : 1



DETAIL L  
SCALE 1 / 5



STAGE 4

- Step 1) Verify that all of the components have been tightened properly
- Step 2) Set the desired height of the Suction Arm
- Step 3) Ensure that the Stopper Bolts are tightened and set to the desired min height and max height

DRAWN	owner	23/01/2013	KENILWORTH COMBUSTION		
CHECKED			TITLE		
QA			SKIM SYSTEM REFERENCE/INSTALLATION		
MFG					
APPROVED					
			SIZE	DWG NO	REV
			C	Skim System_REFERENCE DRAWING	
			SCALE	SHEET 6 OF 6	